

ITEM No	PART No.	DESCRIPTION	QTY.	MATERIAL.	M.A.W.P.
1	C1221C	BPR ASSEMBLY	1	SEE B81221S1	SEE B81221S1
2	C1306A	FLOAT VALVE ASSEMBLY	1	SEE P180581306S1	SEE P180581306S1
3	C2277	FILTER HOUSING ASSEMBLY (LONG)	1	SEE P180542S1	SEE P180542S1
4	FE002	1 MICRON FILTER ELEMENT	1	-	-
5	C1143	FILTER HOUSING ASSEMBLY (SHORT)	1	SEE P180541S1	SEE P180541S1
6	FE003	0.01 MICRON FILTER ELEMENT	1	ALUMINIUM ALLOY	200 bar
7	DM23620	FLOW SWITCH	1	SEE 82362S1	1500 psi
8	MC046	RECEIVER BOTTLE	2	-	200 bar
9	DM1308	RECEIVER ADAPTOR	2	SEE B81308S1	SEE B81308S1
10	GP252	PRESSURE GAUGE, 0-1000 PSI, 1/4" NPT(M) BTM ENTRY	3	-	1000 psf
11	DM13550	BALL VALVE, 3/4" NPT(F)	2	316 ST ST	70 bar
12	VS201	SHUT-OFF VALVE, 1/4" NPT(M)	5	BRASS	161 bar
13	VR293	RELIEF VALVE, 1/4" TUBE - 1/4" NPT, 1100 PSI	1	ST ST	338 bar
14	VM209	SPRING FOR NUPRO RELIEF VALVE	1	-	-
15	VC295	CHECK VALVE, 1/4" NPT(F)	1	BRASS	414 bar
16	NP604	RED NIPPLE, 3/4" NPT - 1/2" NPT(M)	3	PLATED BRASS	241 bar
17	TM698	TUBE, SEAMLESS, 3/4" O/D, X 0.065" W/T.	AS REQ.	316 ST ST	225 bar
18	NP601	STREET ELBOW, 3/4" NPT(F) - 3/4" NPT(M)	2	PLATED BRASS	139 bar
19	FS697	ELBOW CONNECTOR, 3/4" TUBE - 1/2" NPT(M)	5	ST ST	227 bar
20	FP289	MALE BRANCH TEE, 1/4" NPT(F) - 1/4" NPT(M)	1	ST ST	344 bar
21	NP204	STREET ELBOW, 1/4" NPT(F) - 1/4" NPT(M)	3	PLATED BRASS	220 bar
22	FS688	MALE CONNECTOR, 3/4" TUBE - 1/2" NPT(M)	2	ST ST	227 bar
23	NP602	NIPPLE, 3/4" NPT(M)	1	PLATED BRASS	241 bar
24	DM1610	MALE ELBOW (MODIFIED FS698)	1	ST ST	227 bar
25	FP205	MALE ELBOW, 1/4" NPT(M)	1	BRASS	279 bar

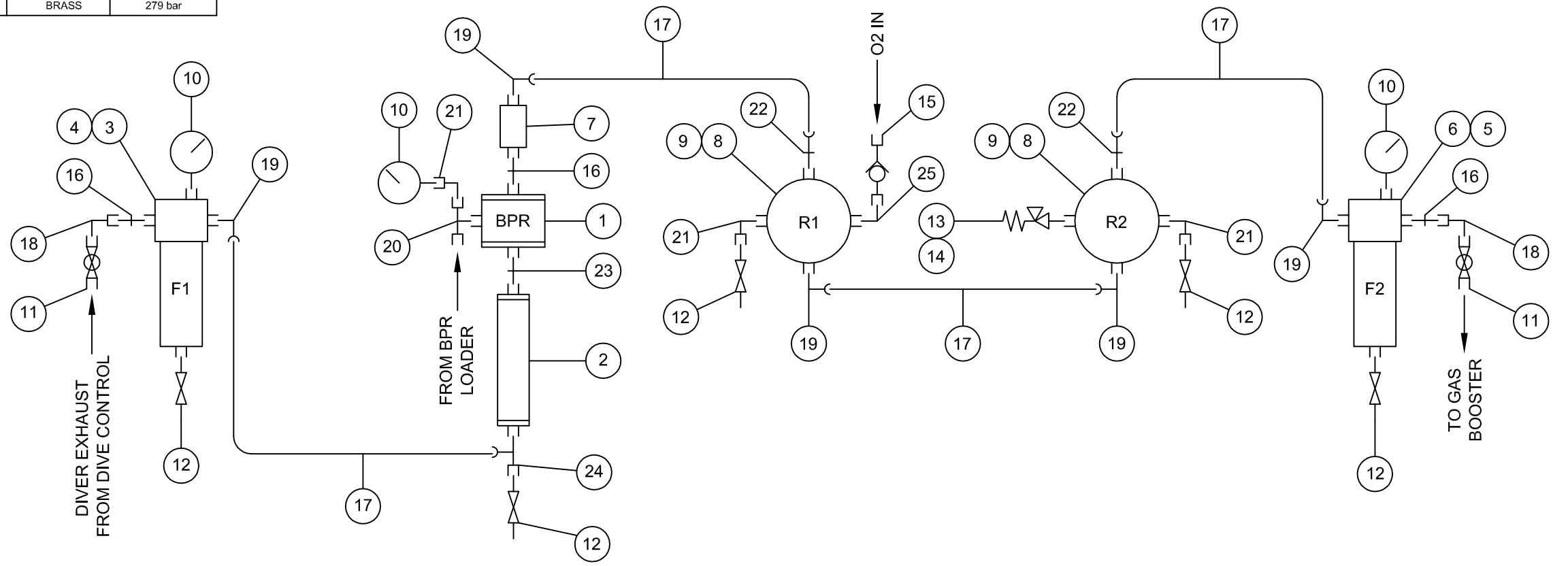
SEE NOTE 1

SEE NOTE 1

SEE NOTE 1

SEE NOTE 1

SEE NOTE 2



DIVEX OWNS THE COPYRIGHT OF THIS DOCUMENT AND ANY DESIGN RIGHT HEREIN. IT IS SUPPLIED IN CONFIDENCE AND MUST NOT BE USED FOR ANY PURPOSE OTHER THAN THAT FOR WHICH IT IS SUPPLIED AND MUST NOT BE REPRODUCED WITHOUT PERMISSION IN WRITING FROM THE OWNERS.

NOTES

- THESE ITEMS ARE PRESSURE VESSELS DESIGNED AND TESTED IN ACCORDANCE WITH PD5500:2015
- RELIEF VALVE TO BE SET PRIOR TO INSTALLATION IN ACCORDANCE WITH GEN-WP-021. SEE RELEVANT ASSEMBLY, INSPECTION AND TEST PLAN.

DENOTES CHANGES MADE AT THIS REVISION.

ALL DIMENSIONS SHOWN ARE IN MM (UOS)  
ALL DIMENSIONS BEFORE PLATING (UOS)  
REMOVE ALL SHARP EDGES AND BURRS

**DIMENSIONAL TOLERANCES**

MACHINING		FABRICATION	
NO DECIMAL PLACES	±1.0	SIZE >0 <100	±0.5
ONE DECIMAL PLACE	±0.2	SIZE >100 <500	±1.5
TWO DECIMAL PLACE	±0.05	SIZE >500	±3.0
ANGULAR TOLERANCE	±0.5°	ANGULAR TOLERANCE	±0.5°

MATERIAL  
REFER TO PARTS LIST

FINISH  
-

THIRD ANGLE PROJECTION

REV	DESCRIPTION	ECN No	BY	DATE	AUTH. BY
R09					
R08	NOTES UPDATED	18445	JR	02/10/15	PB
R07	NOTES ADDED, MATERIAL & MW.P. DATA UPDATED	17528	AN	20/02/15	SC
R06	MATERIAL & MAX ALLOWABLE W.P. DATA ADDED TO PARTS LIST	10715	LS	04/10/08	RTW
R05	AITP, CALC. & TEST CERT DATA ADDED TO PARTS LIST	10417	KB	18/04/08	RTW
R04	PARTS LIST ADDED TO DRAWING	9347	GR	29/05/07	RTW
R00	ISSUED FOR MANUFACTURE				

**DO NOT SCALE DRAWING**

TITLE <b>LP GAS SYSTEM SCHEMATIC</b>	
DRAWING No. <b>P180524S1</b>	REV <b>R08</b>
PART No. <b>B15730</b>	PRODUCT / PROJECT No. <b>GASMIZER</b>
SIZE <b>A2</b>	SCALE <b>NTS</b>
SHT <b>1</b>	OF <b>1</b>

DIVEX LIMITED  
ENTERPRISE DRIVE  
WESTHILL  
ABERDEEN  
AB32 6TQ  
UNITED KINGDOM

Tel: +44(0)1224 740145  
Fax: +44(0)1224 740172  
email: info@divexglobal.com  
www.divexglobal.com