



COBRA Guidance Note

Background

JFD personnel have experienced an issue while bench testing COBRA sets which have been out of service for some time.



ISSUE

After fitting the revised scrubber housing to clients' COBRA sets, JFD technicians found that, during bench testing, the head exhaust valves were sticking.



SOLUTION

Investigations found that due to the period of inactivity, both the internal and external exhaust valves (Figures 1 and 2) had become sticky and did not vent at the correct pressure.

If users also experience this problem, the relief valves should be removed from the COBRA set, cleaned and refitted.

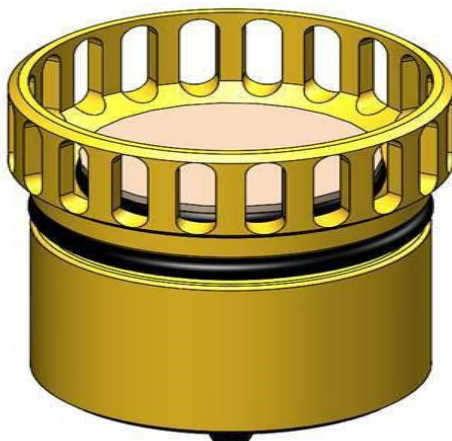


Figure 1 - Internal Exhaust Valve

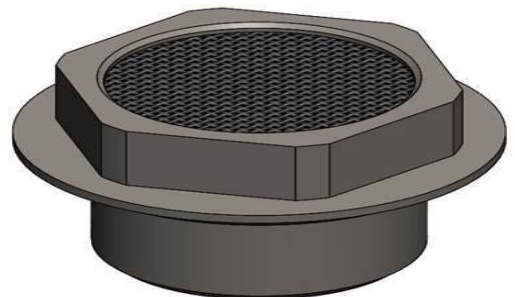


Figure 2 - External Exhaust Valve