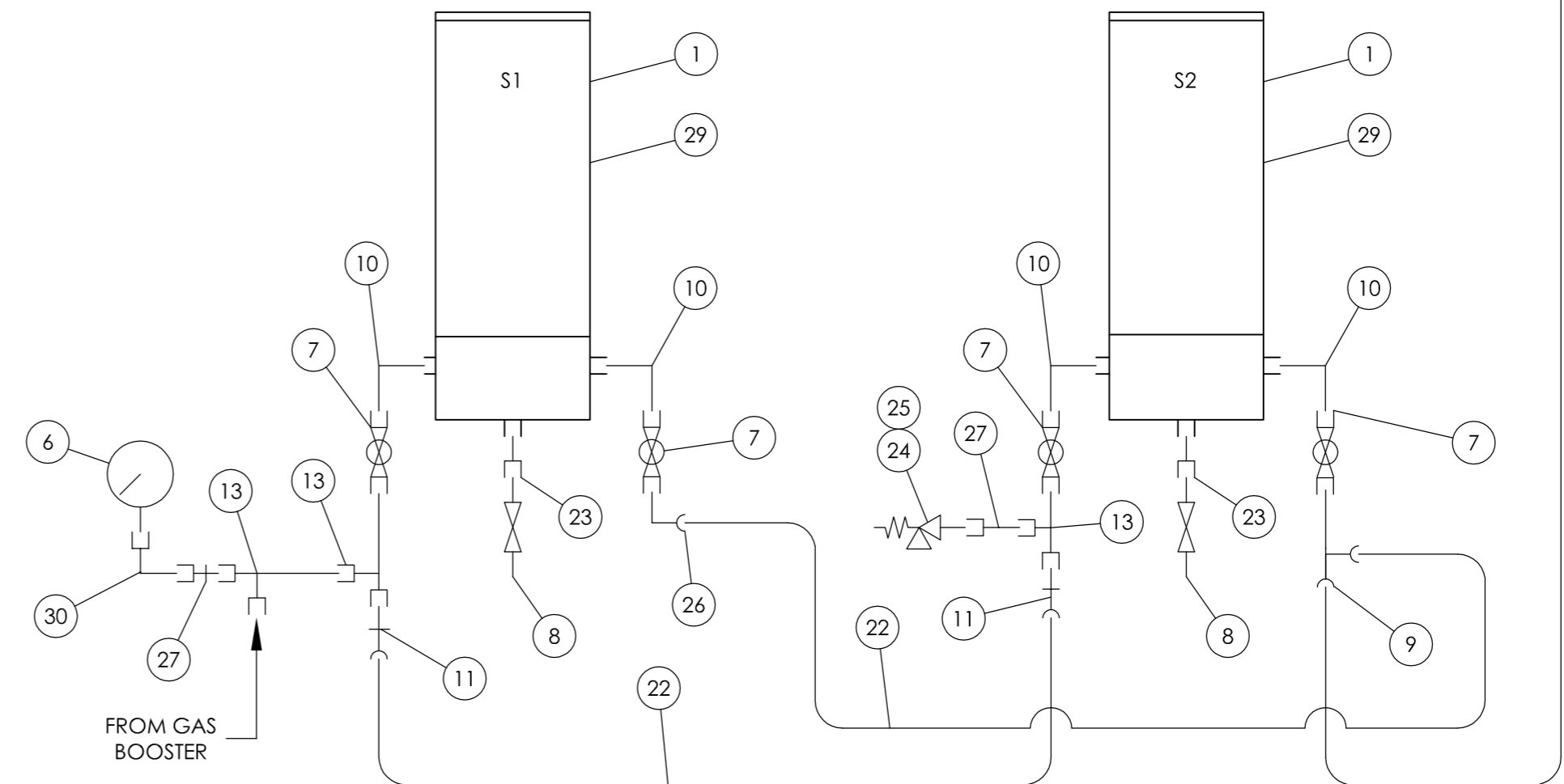
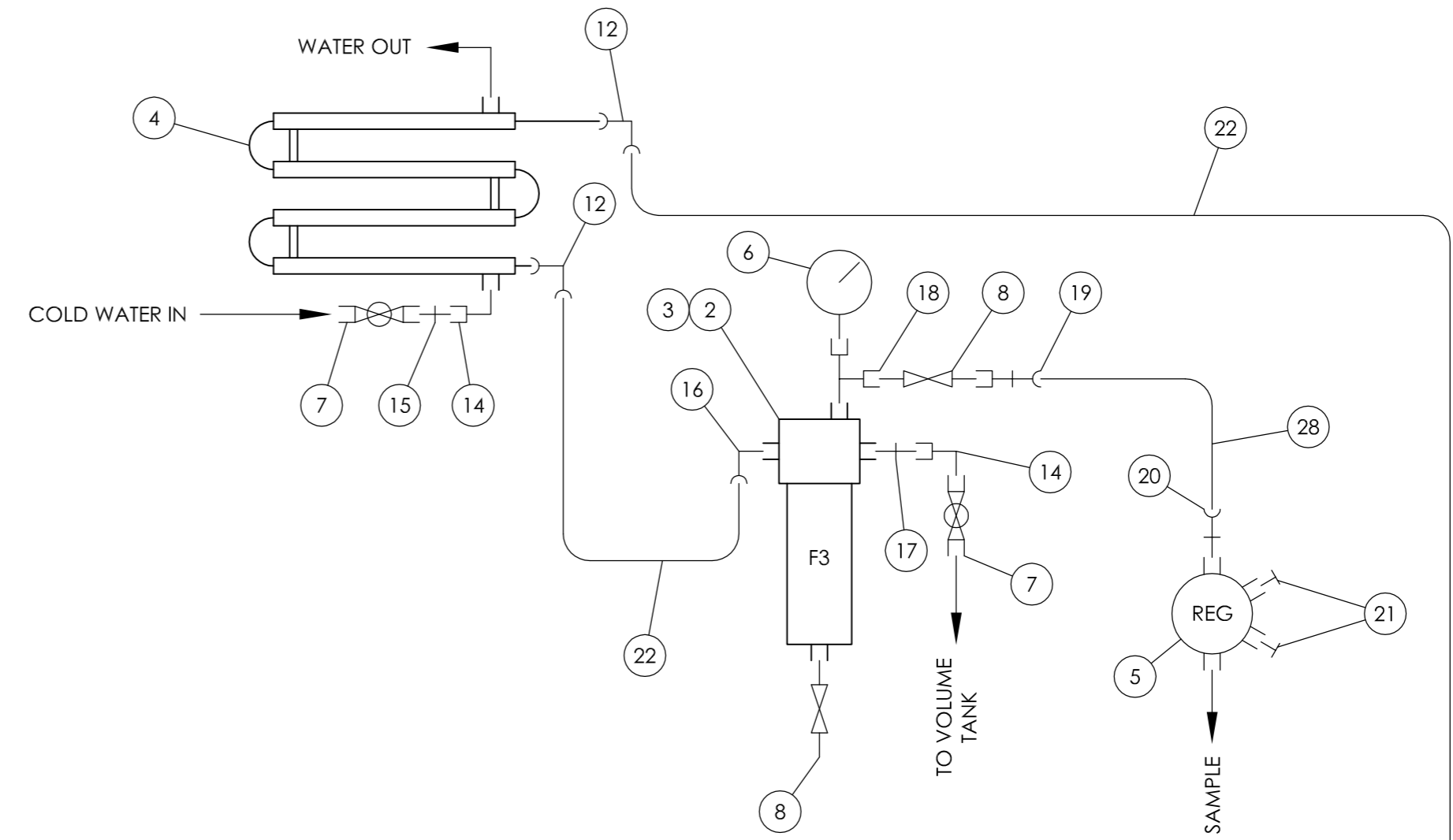


ITEM	DESCRIPTION	QTY.	PART No.	MATERIAL	M.A.W.P.
1	SCRUBBER HOUSING ASSEMBLY (1500 P.S.I.)	2	C1116G	SEE C81115S1	SEE C81115S1
2	FILTER HOUSING, SHORT, ASSY, 1500PSI	1	C1143	SEE P180541S1	SEE P180541S1
3	FILTER, ELEMENT, 1 MICRON	1	FE002	-	-
4	HEAT EXCHANGER,GASMIZER TOPSIDE REPROCESSING UNIT	1	DM613E	SEE B81613S1	SEE B81613S1
5	REGULATOR, PRESSURE, 0-25 PSI	1	RP201	BRASS	205 bar (INLET)
6	GAUGE,PRESSURE 1/4", BOTTOM ENTRY, 2.5"/0-2000 PSI	2	GP226	SS	2000 psi
7	VALVE, BALL, ASSY, 3/8"FNPT	6	DM13540	316SS	206 bar
8	VALVE, SHUT OFF, 1/4" MNPT	4	VS201	BRASS	161 bar
9	TEE ,RUN, (M), 1/2" TUBE-3/8" MNPT, ST.ST.	1	FS495	316SS	530 bar
10	ELBOW, MALE, 3/8" MNPT	4	FP394	316SS	496 bar
11	CONNECTOR, (M), 1/2" TUBE-3/8" MNPT ,ST.ST.	2	FS499	316SS	220 bar
12	FTG, UNION ELBOW, 1/2" TUBE	2	FS492	316SS	220 bar
13	TEE, STREET, 3/8" M-F-FNPT, E/LESS NICKEL PLATE	3	NP313	NP BRASS	207 bar
14	ELBOW, STREET, 3/8" NPT M/F, SS, WP386BAR	2	FP392	316SS	386 bar
15	NIPPLE, 3/8" (M) NPT X 3/8" (M) NPT, SS	1	FP398	316SS	496 bar
16	FTG, ELBOW, MALE, 1/2" TUBE-1/2" MNPT	1	FS496	316SS	220 bar
17	NIPPLE, HEX, 1/2" (M) NPT-3/8" (M) NPT, ST.ST.	1	FP499	316SS	455 bar
18	TEE, MALE RUN, 1/4" NPT F-M-F, SS, WP 390BAR	1	FP295	316SS	390 bar
19	FTG, CONNECTOR, FEMALE, 1/4" TUBE-1/4" FNPT	1	FS298	316SS	350 bar
20	FTG, CONNECTOR, MALE, 1/4" TUBE-1/4" MNPT	2	FS299	316SS	350 bar
21	PLUG, HEX HEAD, 1/4" MNPT, SS, WP551BAR	2	FP290	316SS	551 bar
22	TUBE, STAINLESS STEEL, SEAMLESS, 1/2" OD X 0.049	12 FT	TM497	316SS	255 bar
23	ADAPTOR, 1/4" FNPT-1/4" MNPT, ST.ST.	2	FP297	316SS	455 bar
24	VALVE, RELIEF, NUPRO R3A, 1/4" NPTM, 1/4" TUBE	1	VR293	316SS	338 bar
25	SPRING, RELIEF VALVE, 1500-2250 PSI	1	VM043	-	-
26	FTG, ELBOW, MALE, 1/2" TUBE-3/8" MNPT	1	FS497	316SS	255 bar
27	REDUCER, PIPE THREAD, 3/8" MNPT-1/4" FNPT	2	FP389	316SS	365 bar
28	TUBE, STAINLESS STEEL, SEAMLESS, 1/4" OD X 0.036"	1 FT	TM296	316SS	380 bar
29	CANISTER ASSEMBLY, WITH REMOVEABLE END	2	C1638B	SEE B81638S1	-
30	ELBOW, STREET, 1/4" FNPT-1/4" MNPT	1	FP296	316SS	496 bar

SEE NOTE 1  
SEE NOTE 1  
SEE NOTE 1  
SEE NOTE 2



NOTES:  
1. THESE ITEMS ARE PRESSURE VESSELS DESIGNED AND TESTED IN ACCORDANCE WITH PD5500:2015  
2. RELIEF VALVE TO BE SET PRIOR TO INSTALLATION IN ACCORDANCE WITH GEN-WP-021.  
SEE RELEVANT ASSEMBLY, INSPECTION AND TEST PLAN.

MATERIAL	SEE PARTS LIST	DENOTES CHANGES MADE AT THIS REVISION				TITLE	SCHEMATIC, HP GAS SYSTEM	
FINISH	N/A	R21	TEXT REMOVED	21291	DR	25/07/17	AN	
ALL DIMENSIONS ARE IN mm (UOS) ALL DIMENSIONS BEFORE PLATING (UOS) REMOVE ALL SHARP EDGES AND BURRS		R20	NOTES ADDED AND BOM UPDATED	18445	JR	02/10/15	PB	
		R19	TEST PRESSURE AMENDED & MATERIALS ADDED	17528	AN	20/02/15	SC	
		R00	ISSUED FOR MANUFACTURE			24/07/90		
MACHINING TOLERANCE	FABRICATION TOLERANCE	REV	DESCRIPTION	ECN	BY	DATE	AUTH.	
NO DECIMAL PLACES	±1.60	±0.25	±0.025					
ONE DECIMAL PLACES	±0.05	±0.02	±0.005					
TWO DECIMAL PLACES	±0.015	±0.005	±0.001					
THREE DECIMAL PLACES	±0.005	±0.001	±0.0005					
		THIRD ANGLE PROJECTION		DO NOT SCALE DRAWING		DRAWING NO. P180525S1		
		JFD OWNS THE COPYRIGHT OF THIS DOCUMENT AND ANY DESIGN RIGHT HEREIN. IT IS SUPPLIED IN CONFIDENCE AND MUST NOT BE USED FOR ANY PURPOSE OTHER THAN THAT FOR WHICH IT IS SUPPLIED AND MUST NOT BE REPRODUCED WITHOUT PERMISSION IN WRITING FROM THE OWNERS.		PART NO. B15730		PRODUCT / PROJECT NO. GASMIZER		
		SCALE (UOS) NTS		SHEET 1 OF 1		REV R21		
		JFD WESTHILL ENTERPRISE DRIVE, WESTHILL, ABERDEEN, AB32 6TQ, UK		TEL: +44 (0)1224 740145		E: enquires@jfdglobal.com		