

ITEM	PART No.	DESCRIPTION	QTY
1	DB100058	BCJ FABRIC ASSEMBLY, RABBIT DPM, SHADOW EX.	1
2	DB100127	DRAIN VALVE ASSEMBLY, BCJ, SHADOW	2
3	DB100128	ELBOW ASSEMBLY, SHADOW	1
4	DB1002295	POWER INFLATE ASSEMBLY, BCJ, SHADOW	1
5	DB100140	AUTO-DUMP VALVE ASSEMBLY, BCJ, SHADOW	1
6	DB100668	BLADDER, BCJ, LP JACKET, SHADOW (TESTED)	1
7	DB100087	JACKET INFLATION CYL. ASSY, 0.35LTR,300BAR,SHADOW	1
8	MT040	SPRING, ANTI-COLLAPSE	1
9	DB100033	POUCH ASSEMBLY, 2LTR. BACK MOUNTED BAILOUT, RABBIT	1
10	DB100077	RETAINING LOOP ASSEMBLY, BLACK, BCJ	2



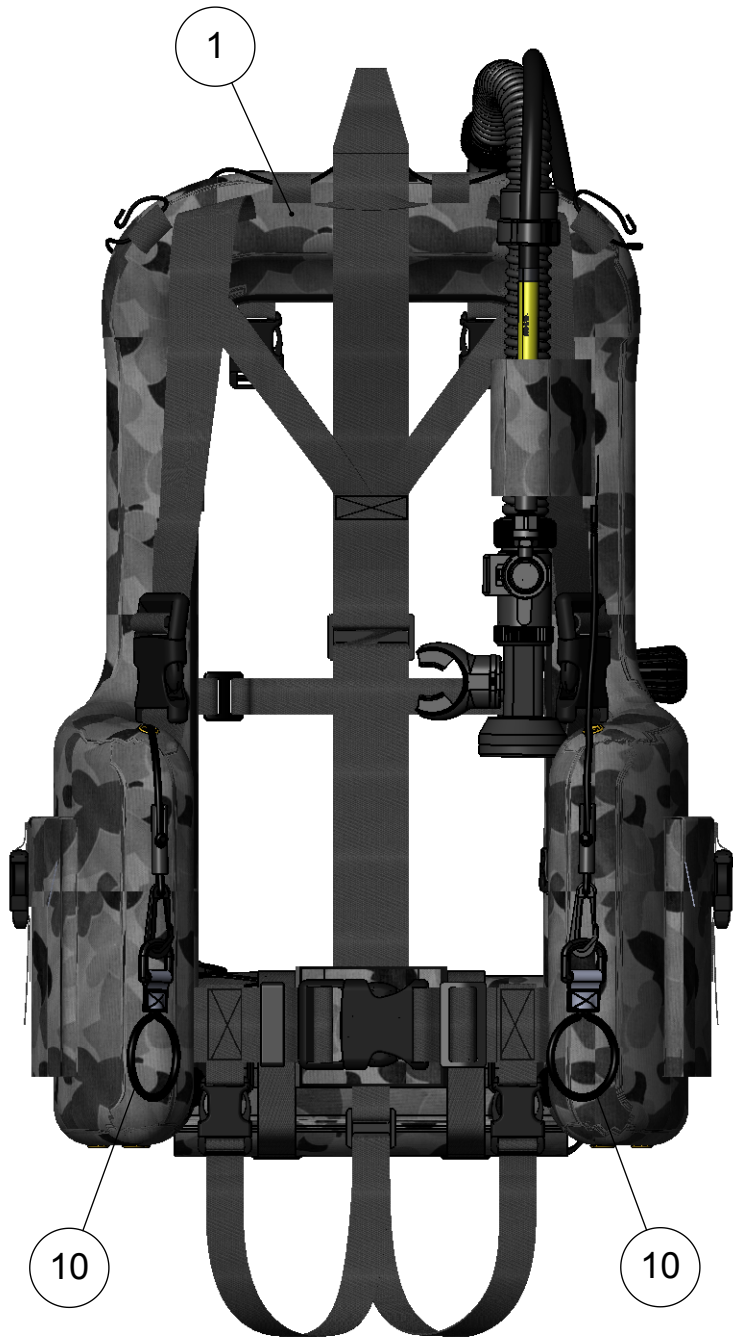
BACK VIEW

BROKEN-OUT
SECTION



BROKEN-OUT
SECTION

2 TYP BOTH SIDES



FRONT VIEW



ISOMETRIC VIEW

DIVEX OWNS THE COPYRIGHT OF THIS DOCUMENT AND ANY DESIGN RIGHT HEREIN. IT IS SUPPLIED IN CONFIDENCE AND MUST NOT BE USED FOR ANY PURPOSE OTHER THAN THAT FOR WHICH IT IS SUPPLIED AND MUST NOT BE REPRODUCED WITHOUT PERMISSION IN WRITING FROM THE OWNERS.

NOTES

- CHECK FOR LEAKS BY FULLY INFLATING AND LEAVING OVERNIGHT.
- RANGING : SIGNATURE TO BE VERIFIED ACCEPTABLE IN ACCORDANCE WITH GEN-WP-115 BY DIVEX MAGNETIC RANGE.



ALL DIMENSIONS SHOWN ARE IN MM (UOS)
ALL DIMENSIONS BEFORE PLATING (UOS)
REMOVE ALL SHARP EDGES AND BURRS

DIMENSIONAL TOLERANCES
MACHINING FABRICATION

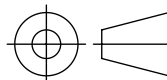
NO DECIMAL PLACES	±1.0	SIZE >0 <100	±0.5
ONE DECIMAL PLACE	±0.2	SIZE >100 <500	±1.5
TWO DECIMAL PLACE	±0.05	SIZE >500	±3.0
ANGULAR TOLERANCE	±0.5°	ANGULAR TOLERANCE	±0.5°

MATERIAL

SEE PARTS LIST

FINISH

N/A



THIRD ANGLE
PROJECTION

R06					
R05					
R04	ITEM 4 CORRECTED & MAG. RANGE NOTE ADDED	18848	JR	03/02/16	SA
R03	ITEM 4 UPDATED	17865	JR	08/05/15	SA
R02	POUCH AND RETAINING LOOPS ADDED	7212	DR	19/11/09	SA
R01	NOTE ADDED AND TITLE AMENDED	7199	SR	31/01/08	SA
R00	ISSUED FOR MANUFACTURE		DR	04/09/07	SA
REV	DESCRIPTION	ECN No	BY	DATE	AUTH.BY

DO NOT SCALE DRAWING

TITLE

BCJ ASSEMBLY L.P.
RABBIT DPM, SHADOW
EX.

DRAWING No.

DB10066S1

REV

R04

PART No.

DB100066

PRODUCT / PROJECT No.

SHADOW EXCURSION

SIZE

A2

SCALE

NTS

SHT

1

OF 1



DIVEX LIMITED
ENTERPRISE DRIVE
WESTHILL
ABERDEEN
AB32 6TQ
UNITED KINGDOM

Tel : +44(0)1224 740145
Fax : +44(0)1224 740172
email : info@divexglobal.com
www.divexglobal.com



DENOTES CHANGES MADE AT THIS REVISION.