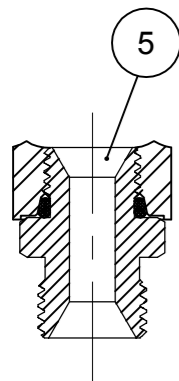
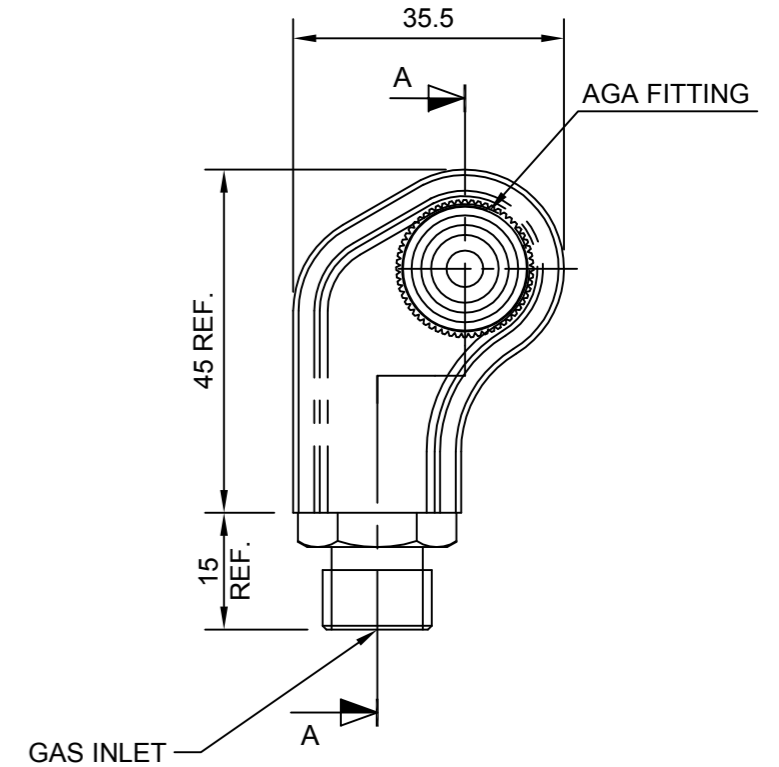
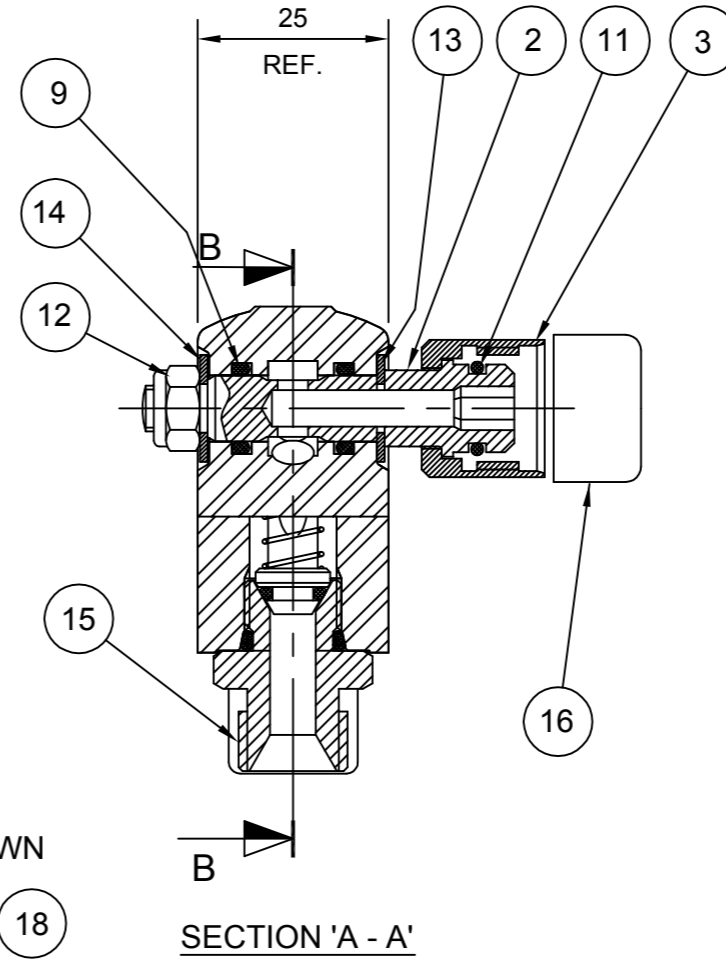
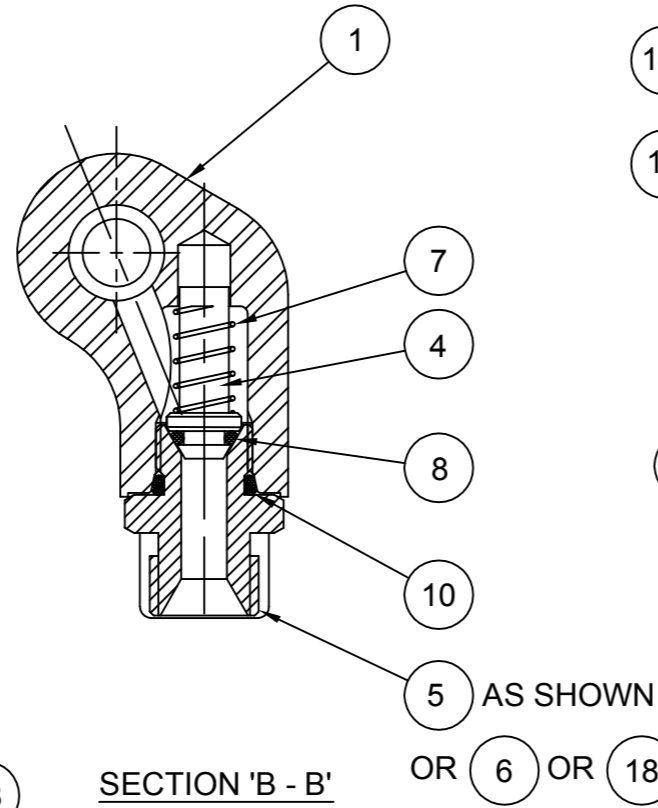
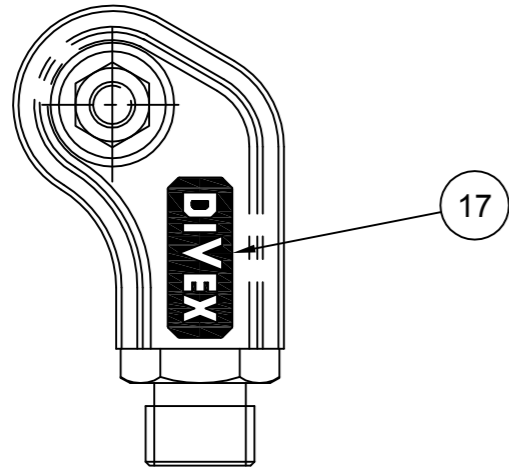
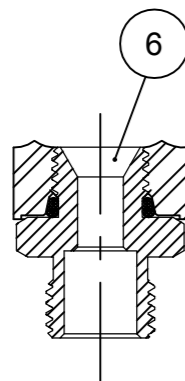


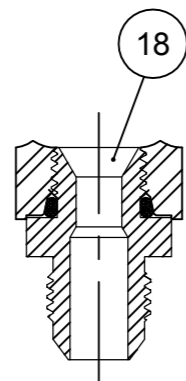
Item No.	Drg. No.	Part No.	Description	Qty
1	U0725	DD020324	BODY, NON RETURN VALVE	1
2	U0704	DD020317	SPINDLE	1
3	U1267	DD332043	NUT, AGA, Mk2	1
4	U0709	DD020337	POPPET	1
5	U0705	DD020319	ADAPTOR, INLET, 9/16" B/N- SAE 1/2"	1
6	U0810	DD020328	ADAPTOR, INLET, 9/16" "O" - SAE 1/2"	1
7	-	DD020338	SPRING	1
8	-	DD020321	O-RING, 4.7ID x 1.78SECT.	1
9	-	DD020322	O-RING, 8.7ID x 1.78SECT.	2
10	-	DD020323	O-RING, 10.5ID x 1.83SECT.	1
11	-	DE1072	O-RING, HOSE TAIL, AGA	1
12	-	DD020335	NUT, M6 NYLOC	1
13	-	DD020330	WASHER, 14 O.D.x 9 I.D.x 1	1
14	-	DD020331	WASHER, 14 O.D x 6 I.D.x 1	1
15	-	DD332367	DUSTCAP	1
16	-	DD332375	DUSTCAP	1
17	-	T14760	BADGE, ENAMEL, DIVEX LOGO	1
18	-	DD020339	ADAPTOR, INLET, 6 JIC MALE - SAE 1/2"	1



ASSEMBLY
PART No.
DD020104



ASSEMBLY
PART No.
DD020105



ASSEMBLY
PART No.
DD020106

DIVEX OWNS THE COPYRIGHT OF THIS DOCUMENT AND ANY DESIGN RIGHT HEREIN. IT IS SUPPLIED IN CONFIDENCE AND MUST NOT BE USED FOR ANY PURPOSE OTHER THAN THAT FOR WHICH IT IS SUPPLIED AND MUST NOT BE REPRODUCED WITHOUT PERMISSION IN WRITING FROM THE OWNERS

NOTES

ALL DIMENSIONS SHOWN ARE IN MM (UOS)
ALL DIMENSIONS BEFORE PLATING (UOS)
REMOVE ALL SHARP EDGES AND BURRS

DIMENSIONAL TOLERANCES		MACHINING		FABRICATION	
NO DECIMAL PLACES	±1.0	SIZE >0 <100	±0.5		
ONE DECIMAL PLACE	±0.2	SIZE >100 <500	±1.5		
TWO DECIMAL PLACE	±0.05	SIZE >500	±3.0		
ANGULAR TOLERANCE	±0.5°	ANGULAR TOLERANCE	±0.5°		

THIRD ANGLE
PROJECTION

REV	DESCRIPTION	ECN No	BY	DATE	AUTH. BY
R09					
R08					
R07					
R06	ITEM 18 & NEW PART No. ADDED	13094	SJ	11/12/2009	RTW
R05	ITEM No. 7 CHANGED	4388	PW	14/07/2003	RTW
R04	UPDATED	3459	PW	01/08/2001	RTW
R00	ISSUED FOR MANUFACTURE		WS	24/03/1999	DRS

TITLE	
AGA SINGLE INLET MANIFOLD ASSEMBLY	
DRAWING No. U0811S1	REV R06
PART No. DD020104 DD020105 DD020106	PRODUCT / PROJECT No. AGA
SIZE A3	SCALE 1 : 1
SHT 1	OF 1

DO NOT SCALE DRAWING



DIVEX LIMITED
ENTERPRISE DRIVE
WESTHILL
ABERDEEN
AB32 6TQ
UNITED KINGDOM

Tel: +44(0)1224 740145
Fax: +44(0)1224 740172
email: info@divexglobal.com
www.divexglobal.com