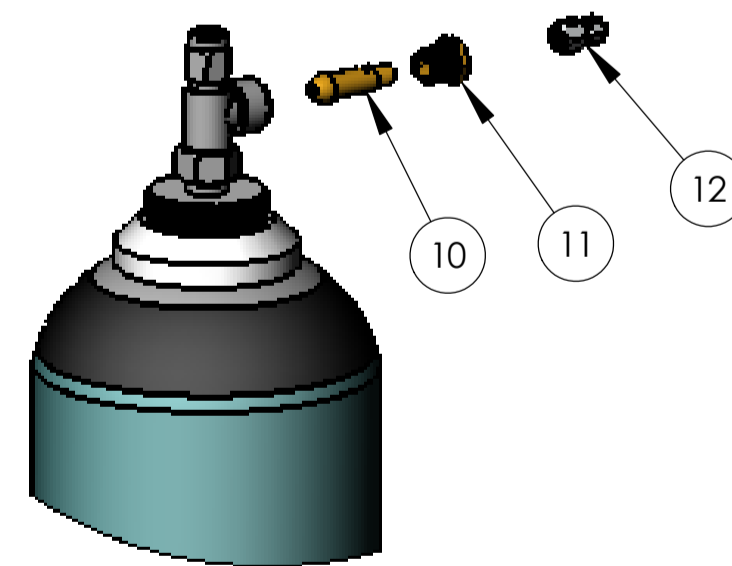


**ASSEMBLY OVERALL VIEWS**  
(SCALE 1 : 15)

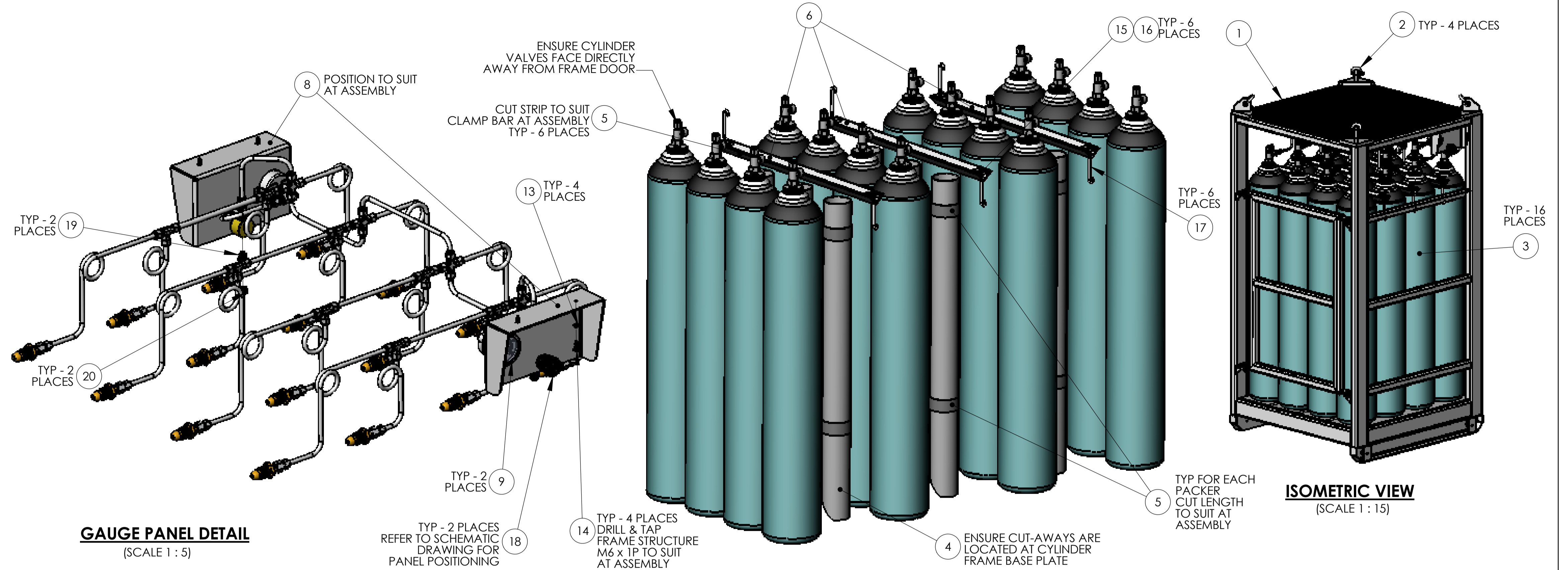
**ASSEMBLY NOTES :-**

1. REFERENCE SCHEMATIC DRAWING - P2128-DG-301.
  2. ATTACH UNIT NAMEPLATE TO FRAMEWORK PLATE TO SUIT AT ASSEMBLY. DRILL TO SUIT SECURING POP RIVETS SUPPLIED.
- ATTACH FRAMEWORK LIFT TEST PLATE (SUPPLIED LOOSE WITH FRAMEWORK FROM FABRICATING VENDOR) TO SUIT AT ASSEMBLY. DRILL TO SUIT SECURING POP RIVETS SUPPLIED.

GROSS = 2300kg  
TARE = 2000kg  
SWL = 300kg

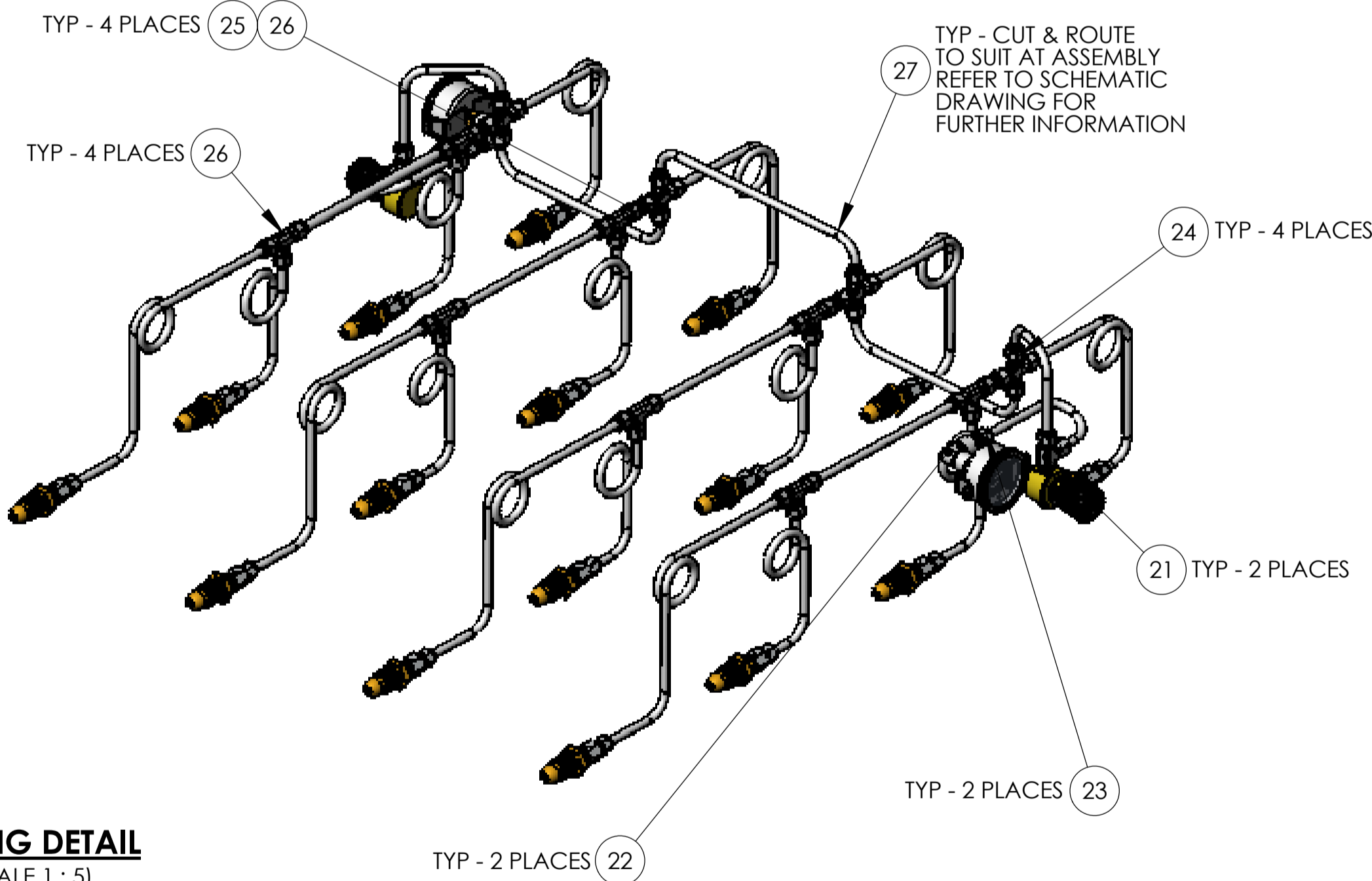


**TYPICAL CYLINDER FITTINGS DETAIL**  
(SCALE 1 : 5)



**GAUGE PANEL DETAIL**  
(SCALE 1 : 5)

**CYLINDER/PACKER AND CLAMP VIEW**  
(SCALE 1 : 10)



**TUBING DETAIL**  
(SCALE 1 : 5)

REFER ALSO TO SCHEMATIC DRAWING

ITEM NO.	PART NUMBER	DESCRIPTION	Default/QTY.
1	DD340305	FRAME ASSEMBLY, 16 CYLINDER QUAD (4x4)	1
2	DD340391	SHACKLE, BOW, SCREWED PIN, 2.0 TON SWL	4
3	DD340100	CYLINDER, c/w 5/8" BSP OUTLET VALVE, 44.5L, 350BAR	16
4	DD340290	PACKER, TUBULAR, CYLINDERS, QUADS	9
5	MC086	MISC, RUBBER STRIP, 50mm x 3mm (1/8") T k, PER m	33m
6	DD340293	CLAMP BAR, 4 ROW CYLINDER QUAD	3
8	DD340298	PANEL, GAUGE & VALVE, STANDARD, QUAD	2
9	DD320085	Gauge, 63mm, 400B	2
10	DD380406	CONNECTOR, CYL, 350 BAR, 5/8 B/N-1/4"NPT	16
11	DD380318	NUT, MALE, CONNECTOR, CYLINDER, BRASS, 5/8" BSP	16
12	DD405795	P/Fitting, 8mm OD x 1/4" Fm	16
13	FW143	WASHER, M6, FORM A, BZP	4
14	FB418	SCREW, HEX SET, M6 x 16, BZP	4
15	FW142	WASHER, M8, FORM A, BZP	6
16	FN107	NUT, NYLOC, M8, BZP	6
17	FB360	BOLT, HOOK, 130mm LONG, 50mm M8 THREAD, BZP	6
18	DD360135	VALVE, DD ROUND, 2 x 1/4" NPT-F PORTS	2
19	DD405005	ADAPTOR, 1/4"NPT(M) x 1/4"BSP(M), 6000 psi MAX	2
20	DD332370	CAP, PLASTIC THREADED, 1/4BSP Fm	2
21	DD405764	P/FITTING, 8mm x 1/4" NPT MALE RUN TEE	2
22	FP286	ELBOW, FEMALE, SS, 1/4" NPT	2
23	DD405542	P/FITTING, 8mm x 1/4" NPT MALE STUD	2
24	DD405655	P/FITTING, 8mm EQUAL CROSS	4
25	DD405860	P/FITTING, 8mm x 8mm PORT CONNECTOR	4
26	DD405934	P/FITTING, 8mm EQUAL TEE, SS	8
27	DD310389/1	TUBE, 8mm x 1.0 W.T. ST. STEEL, /1m, SS 316	13.3m

**MATERIAL LIST NOTES :-**

1. DD340108 (KEY ASSEMBLY W/LANYARD) - 2 OFF ARE NOT SHOWN ON ASSEMBLY VIEWS - ATTACH WHIPPING TWINE TO FRAMEWORK TOP MESH.
2. E1108 (ADHESIVE, LOCTITE 406, CYANACROLYATE, 20 GRAM) - NOT SHOWN ON ASSEMBLY.
3. SM019 (SNOOP LEAK DETECTOR, 8 FL. OZ) - NOT SHOWN ON ASSEMBLY.
4. FC023 (FSTR, RIVET, POP, 3.1 dia x 10mm LONG) - 6 OFF & T1059 (NAMEPLATE, DIVEX, COMPRESSOR) - NOT SHOWN ON ASSEMBLY - SEE ALSO NOTE ON ASSEMBLY OVERALL VIEWS.

THIRD ANGLE PROJECTION		MATERIAL:				FINISH:				DIVERSE OWNERS THE COPYRIGHT OF THIS DOCUMENT AND ANY DESIGN RIGHT EMBODIED HEREIN. IT IS SUPPLIED IN CONFIDENCE AND MUST NOT BE USED FOR ANY PURPOSE OTHER THAN THAT FOR WHICH IT IS SUPPLIED AND MUST NOT BE REPRODUCED WITHOUT PERMISSION IN WRITING FROM THE OWNERS.		 <small>DIVEX LIMITED ENTERPRISE DRIVE WESTHILL ABERDEEN, AB32 6PX UNITED KINGDOM</small> <small>TEL : +44(0)1224 740145 FAX : +44(0)1224 740172 e-mail : info@divex.co.uk www.divex.co.uk</small>	
REFER TO MATERIAL LIST		NOT APPLICABLE				ALL DIMENSIONS IN MM (UOS)		SCALE AS NOTED		PRODUCT CYLINDER QUADS			
1	REFER TO ECN	5171	MS	19/08/04	RTW	29/06/05	RTW	29/06/05	RTW	29/06/05	REMOVE ALL SHARP EDGES & BURRS	<b>16 CYLINDER QUAD (4 x 4) ASSEMBLY</b>	
0	ISSUED FOR MANUFACTURE	N/A	SRB	24/07/00	RTW	28/03/01	RTW	28/03/01	RTW	28/03/01	DIMENSIONAL TOLERANCES : NO DECIMAL PLACES ±1.0 ONE DECIMAL PLACES ±0.2 TWO DECIMAL PLACES ±0.05 ANGULAR TOLERANCE ±0.5°		
REV	DESCRIPTION OF REVISION	ECN	DRAWN BY	DATE	DRAFTING CHECK BY	DATE	ENGINEER CHECK BY	DATE	APPROVAL BY	DATE	ALL DIMENSIONS BEFORE PLATING (UOS)	PART No. <b>DD340009</b>	TITLE
											CAD REF No. 13907-1	DRG No. <b>P2128-DG-300</b>	SHT <b>1</b>
												REV <b>1</b>	