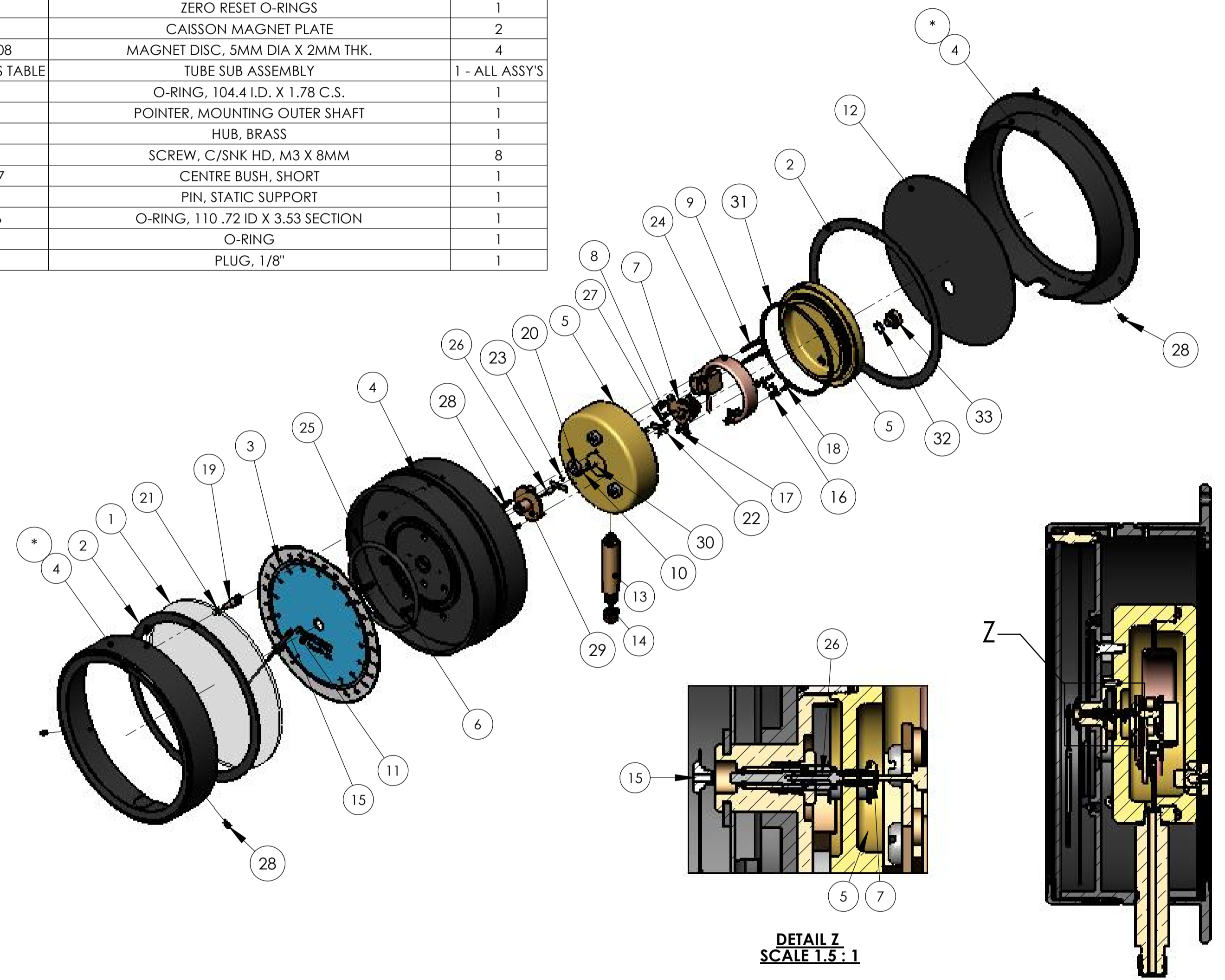


ITEM NO.	PART NUMBER	DESCRIPTION	Qty.
1	GP601	WINDOW, 8.5"	1
2	GP726	GASKET, FLEXIMOUNT GAUGE, 60 SHORE, 8.5"	2
3	GP604	DIAL, C/W DIVEX LOGO, 8.5"	1
4	GP680	CASE, FLEXIMOUNT GAUGE, 8.5"	1
5	GP720	CAPSULE SET, 125MM O.D, 6" CAISSON GAUGE	1
6	GP734	SCREW, M5 X 15 CSK/ HD, SLOTTED, MACHINE, SS	3
7	GP620	MOVEMENT, 4" & SEC GAUGES 1/4"	1
8	FB513	SCREW, M/C, PAN HD, M4 X 6MM SS	2
9	GP657	SCREW, CHEESEHEAD, M4 X 30 S/S	2
10	GP360S2	JEWEL CARRIAGE	1
11	GPX010	CLIP, 'C', MOULDED	1
12	GP592	8.5IN CAISSON BACKS	1
13	GP737	STEM, 93MM LONG, 1/4" NPT	1
14	GP673	CAP, DUST, RED, 1/4" NPT	1
15	GP607	POINTER, C/W HUB, 8.5"	1
16	GP635	WASHERS, SHOULDER S/S	2
17	GP636	NUTS, SHOULDER	2
18	GP637	SHOULDER SCREWS S/S, 003.55.001	2
19	GP626	ZERO RESET DRIVE	1
20	GP627	SMALL DELRIN BUSHES	1
21	GP598	ZERO RESET O-RINGS	1
22	GP666	CAISSON MAGNET PLATE	2
23	GP360308	MAGNET DISC, 5MM DIA X 2MM THK.	4
24	SEE VARIANTS TABLE	TUBE SUB ASSEMBLY	1 - ALL ASSYS
25	GP597	O-RING, 104.4 I.D. X 1.78 C.S.	1
26	GP645	POINTER, MOUNTING OUTER SHAFT	1
27	GP644	HUB, BRASS	1
28	FN0691	SCREW, C/SNK HD, M3 X 8MM	8
29	GPX027	CENTRE BUSH, SHORT	1
30	GP646	PIN, STATIC SUPPORT	1
31	E15306	O-RING, 110.72 ID X 3.53 SECTION	1
32	GP736	O-RING	1
33	GP735	PLUG, 1/8"	1

**BOTTOM CONNECTION GAUGE**



ISOMETRIC VIEW



DETAIL Z SCALE 1.5: 1

SECTION VIEW SCALE 1:2

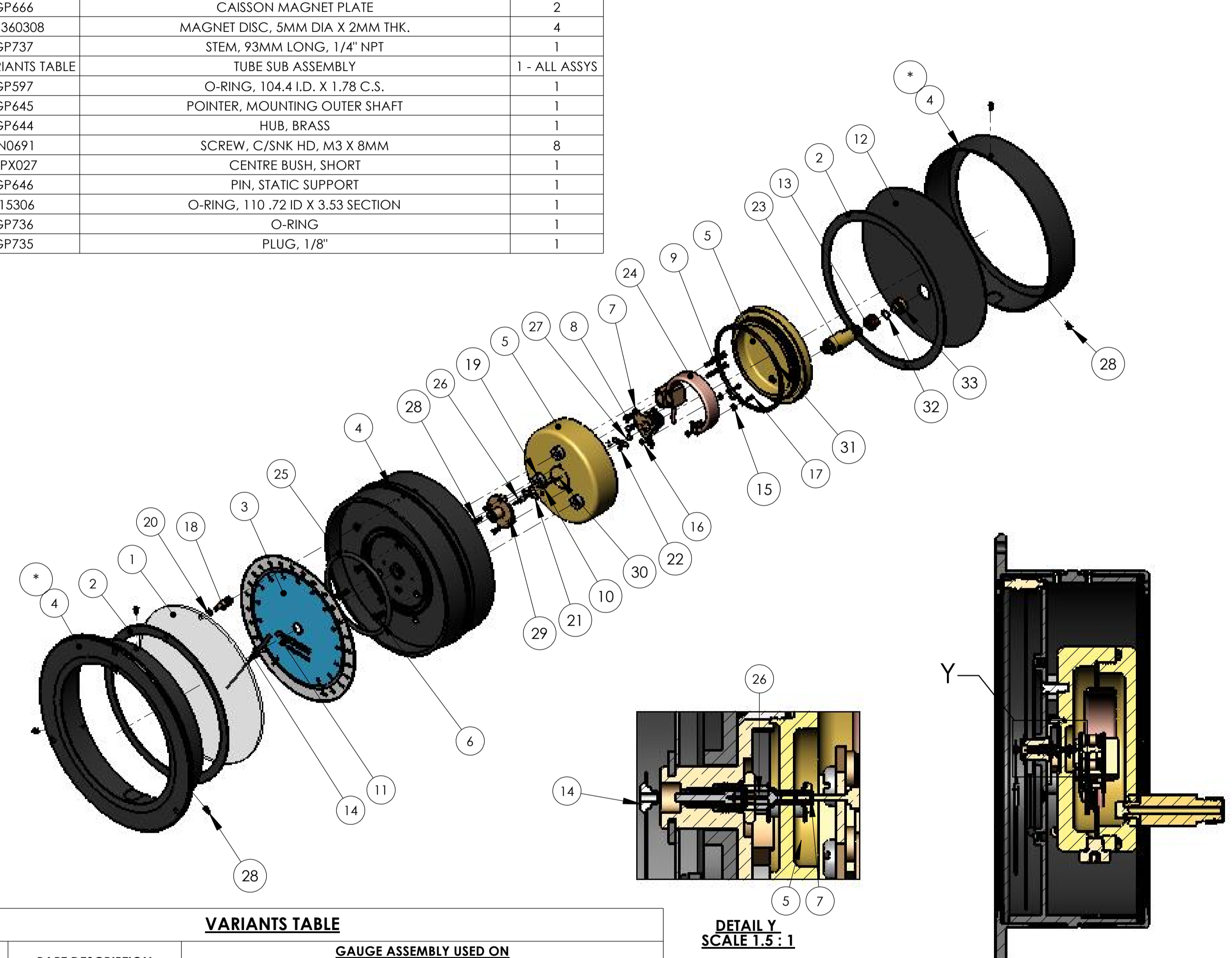
VARIANTS TABLE			
PART NUMBER	PART DESCRIPTION	GAUGE ASSEMBLY USED ON	
		ASSEMBLY NUMBER	DESCRIPTION
GP769	TUBE SUB ASSEMBLY, 4", 10 BAR	GP371	GAUGE, SECAISSON, 8.5", SB, 300FT/90MT, 0.25% ACC
GP772	TUBE SUB ASSEMBLY, 4", 25 BAR	GP373	GAUGE, SECAISSON, 8.5", SB, 720FT/220MT, 0.25% ACC
GP773	TUBE SUB ASSY, 4", 40 BAR	GP375	GAUGE, SECAISSON, 8.5", SB, 1200FT/360MT, 0.25% ACC
GP775	TUBE SUB ASSEMBLY, 4", 60 BAR	GP377	GAUGE, SECAISSON, 8.5", SB, 1500FT/450MT, 0.25% ACC
		GP381	GAUGE, SECAISSON, 8.5", SB, 2000FT/600MT, 0.25% ACC

ITEM NO.	PART NUMBER	DESCRIPTION	Qty.
1	GP601	WINDOW, 8.5"	1
2	GP726	GASKET, FLEXIMOUNT GAUGE, 60 SHORE, 8.5"	2
3	GP604	DIAL, C/W DIVEX LOGO, 8.5"	1
4	GP680	CASE, FLEXIMOUNT GAUGE, 8.5"	1
5	GP720	CAPSULE SET, 125MM O.D, 6" CAISSON GAUGE	1
6	GP734	SCREW, M5 X 15 CSK/ HD, SLOTTED, MACHINE, SS	3
7	GP620	MOVEMENT, 4" & SEC GAUGES 1/4"	1
8	FB513	SCREW, M/C, PAN HD, M4 X 6MM SS	2
9	GP657	SCREW, CHEESEHEAD, M4 X 30 S/S	2
10	GP360S2	JEWEL CARRIAGE	1
11	GPX010	CLIP, 'C', MOULDED	1
12	GP592	8.5IN CAISSON BACKS	1
13	GP673	CAP, DUST, RED, 1/4" NPT	1
14	GP607	POINTER, C/W HUB, 8.5"	1
15	GP635	WASHERS, SHOULDER S/S	2
16	GP636	NUTS, SHOULDER	2
17	GP637	SHOULDER SCREWS S/S, 003.55.001	2
18	GP626	ZERO RESET DRIVE	1
19	GP627	SMALL DELRIN BUSHES	1
20	GP598	ZERO RESET O-RINGS	1
21	GP666	CAISSON MAGNET PLATE	2
22	GP360308	MAGNET DISC, 5MM DIA X 2MM THK.	4
23	GP737	STEM, 93MM LONG, 1/4" NPT	1
24	SEE VARIANTS TABLE	TUBE SUB ASSEMBLY	1 - ALL ASSYS
25	GP597	O-RING, 104.4 I.D. X 1.78 C.S.	1
26	GP645	POINTER, MOUNTING OUTER SHAFT	1
27	GP644	HUB, BRASS	1
28	FN0691	SCREW, C/SNK HD, M3 X 8MM	8
29	GPX027	CENTRE BUSH, SHORT	1
30	GP646	PIN, STATIC SUPPORT	1
31	E15306	O-RING, 110.72 ID X 3.53 SECTION	1
32	GP736	O-RING	1
33	GP735	PLUG, 1/8"	1

**REAR CONNECTION GAUGE**



ISOMETRIC VIEW



DETAIL Y SCALE 1.5: 1

SECTION VIEW SCALE 1:2

VARIANTS TABLE			
PART NUMBER	PART DESCRIPTION	GAUGE ASSEMBLY USED ON	
		ASSEMBLY NUMBER	DESCRIPTION
GP769	TUBE SUB ASSY, 4", 10 BAR	GP370	GAUGE, SECAISSON, 8.5", PR, 300FT/90MT, 0.25% ACC
GP772	TUBE SUB ASSY, 4", 25 BAR	GP372	GAUGE, SECAISSON, 8.5", PR, 720FT/220MT, 0.25% ACC
		GP372HT	GAUGE, SECAISSON, 8.5", PB, 0-220MTR/22BAR, 0.25% ACC
GP773	TUBE SUB ASSY, 4", 40 BAR	GP376	GAUGE, SECAISSON, 8.5", PR, 1500FT/450MT, 0.25% ACC
GP775	TUBE SUB-ASSY, 4", 60 BAR	GP379AB	GAUGE, SECAISSON, 8.5", PR, 1650FT/500MT, 0.25% ACC
		GP380	GAUGE, SECAISSON, 8.5", PR, 2000FT/600MT, 0.25% ACC

**DIVEX OWNS THE COPYRIGHT OF THIS DOCUMENT AND ANY DESIGN RIGHT HEREIN. IT IS SUPPLIED IN CONFIDENCE AND MUST NOT BE USED FOR ANY PURPOSE OTHER THAN THAT FOR WHICH IT IS SUPPLIED AND MUST NOT BE REPRODUCED WITHOUT PERMISSION IN WRITING FROM THE OWNERS.**

NOTES  
PARTS MARKED \* CAN BE SWAPPED TO MANUFACTURE SURFACE MOUNT AND PANEL MOUNTED VERSIONS WHEN REQUIRED.

ALL DIMENSIONS SHOWN ARE IN MM (UOS)  
ALL DIMENSIONS BEFORE PLATING (UOS)  
REMOVE ALL SHARP EDGES AND BURRS

DIMENSIONAL TOLERANCES			
MACHINING		FABRICATION	
NO DECIMAL PLACES	±1.0	SIZE >0 <100	±0.5
ONE DECIMAL PLACE	±0.2	SIZE >100 <500	±1.5
TWO DECIMAL PLACE	±0.05	SIZE >500	±3.0
ANGULAR TOLERANCE	±0.5°	ANGULAR TOLERANCE	±0.5°

MATERIAL  
REFER TO PARTS LIST

FINISH  
N/A



REV	DESCRIPTION	ECN No	BY	DATE	AUTH. BY
R06					
R05					
R04					
R03					
R02					
R01					
R00	ISSUED FOR MANUFACTURE		SJ	17/10/08	MS

TITLE			
<b>GAUGE, 8.5", SECAISSON, ALL VARIANTS</b>			
PRODUCT / PROJECT No. GAUGES			
PART No. GP370		DRAWING No. GP370S1	
SIZE A1	SCALE 1:4(UOS)	SHT OF 1 1	REV R00

**DIVEX**  
DIVEX LIMITED  
ENTERPRISE DRIVE  
WESTHILL  
ABERDEEN  
AB32 6TQ  
UNITED KINGDOM  
Tel : +44(0)1224 740145  
Fax : +44(0)1224 740172  
email : info@divexglobal.com  
www.divexglobal.com

**DO NOT SCALE DRAWING**