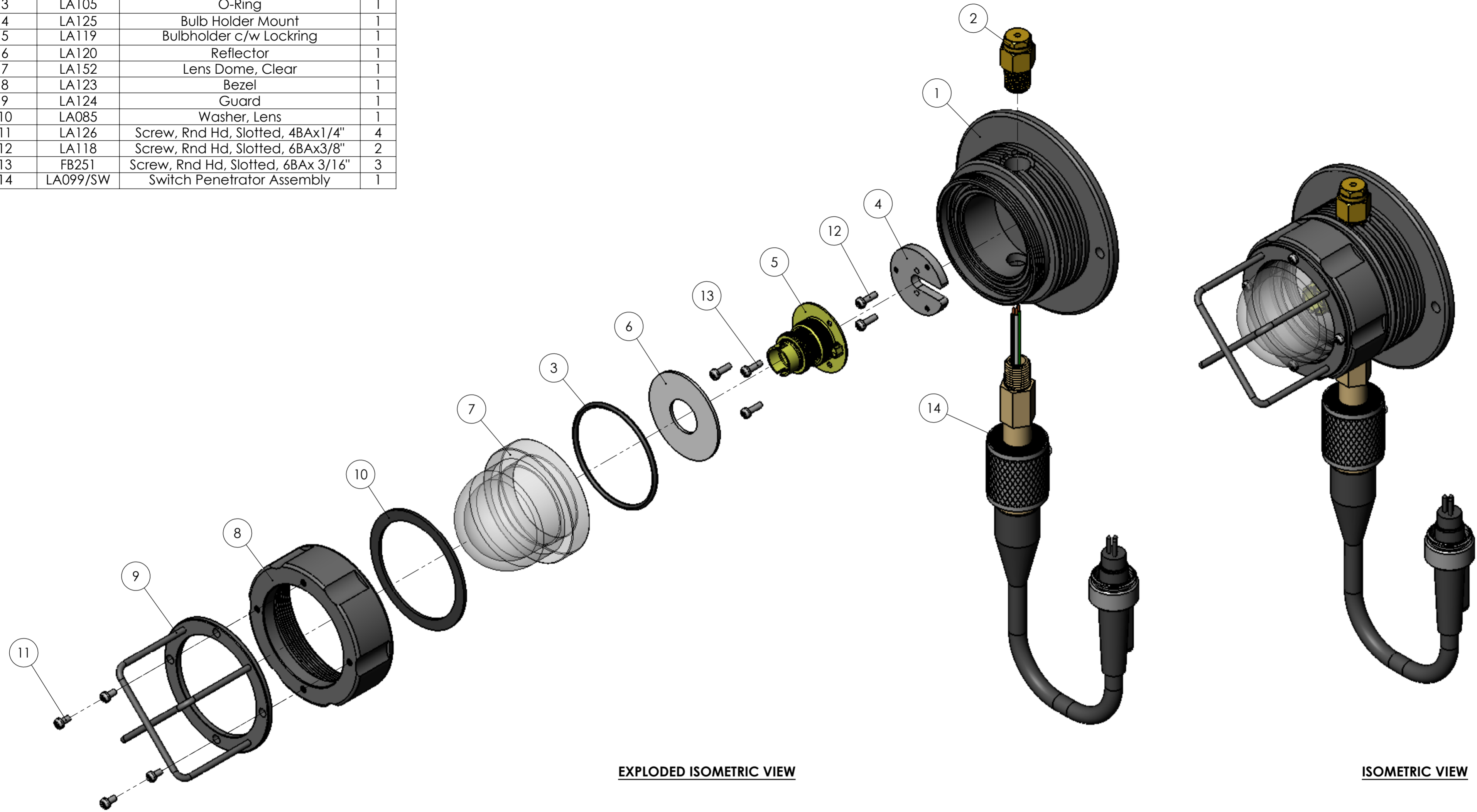


ITEM NO.	PART NO.	DESCRIPTION	QTY.
1	LA101	Body	1
2	LA104	Relief Valve	1
3	LA105	O-Ring	1
4	LA125	Bulb Holder Mount	1
5	LA119	Bulbholder c/w Lockring	1
6	LA120	Reflector	1
7	LA152	Lens Dome, Clear	1
8	LA123	Bezel	1
9	LA124	Guard	1
10	LA085	Washer, Lens	1
11	LA126	Screw, Rnd Hd, Slotted, 4BAx1/4"	4
12	LA118	Screw, Rnd Hd, Slotted, 6BAx3/8"	2
13	FB251	Screw, Rnd Hd, Slotted, 6BAx 3/16"	3
14	LA099/SW	Switch Penetrator Assembly	1



EXPLODED ISOMETRIC VIEW

ISOMETRIC VIEW

DIVEX OWNS THE COPYRIGHT OF THIS DOCUMENT AND ANY DESIGN RIGHT HEREIN. IT IS SUPPLIED IN CONFIDENCE AND MUST NOT BE USED FOR ANY PURPOSE OTHER THAN THAT FOR WHICH IT IS SUPPLIED AND MUST NOT BE REPRODUCED WITHOUT PERMISSION IN WRITING FROM THE OWNERS.

NOTES

ALL DIMENSIONS SHOWN ARE IN MM (UOS)
 ALL DIMENSIONS BEFORE PLATING (UOS)
 REMOVE ALL SHARP EDGES AND BURRS

DIMENSIONAL TOLERANCES			
MACHINING	FABRICATION		
NO DECIMAL PLACES	±1.0	SIZE >0 <100	±0.5
ONE DECIMAL PLACE	±0.2	SIZE >100 <500	±1.5
TWO DECIMAL PLACE	±0.05	SIZE >500	±3.0
ANGULAR TOLERANCE	±0.5°	ANGULAR TOLERANCE	±0.5°

MATERIAL
SEE PARTS LIST

FINISH
N/A

THIRD ANGLE PROJECTION

REV	DESCRIPTION	ECN No	BY	DATE	AUTH BY
R06					
R05					
R04					
R03					
R02					
R01	ITEM 10 REPLACED	12485	LS	04/06/09	RTW
R00	ISSUED FOR MANUFACTURE		LS	26/06/07	RTW

DO NOT SCALE DRAWING

TITLE			
LIGHT HB21 HYPERBARIC C/W SWITCH & CONNECTOR			
PRODUCT / PROJECT No. Aquabeam Lighting Systems			
PART No.	DRAWING No.		
LA117	LA117S1		
SIZE	SCALE	SHT OF	REV
A2	1:5	1 1	R01

DIVEX
 DIVEX LIMITED
 ENTERPRISE DRIVE
 WESTHILL
 ABERDEEN
 AB32 6TQ
 UNITED KINGDOM

Tel : +44(0)1224 740145
 Fax : +44(0)1224 740172
 email : info@divexglobal.com
 www.divexglobal.com