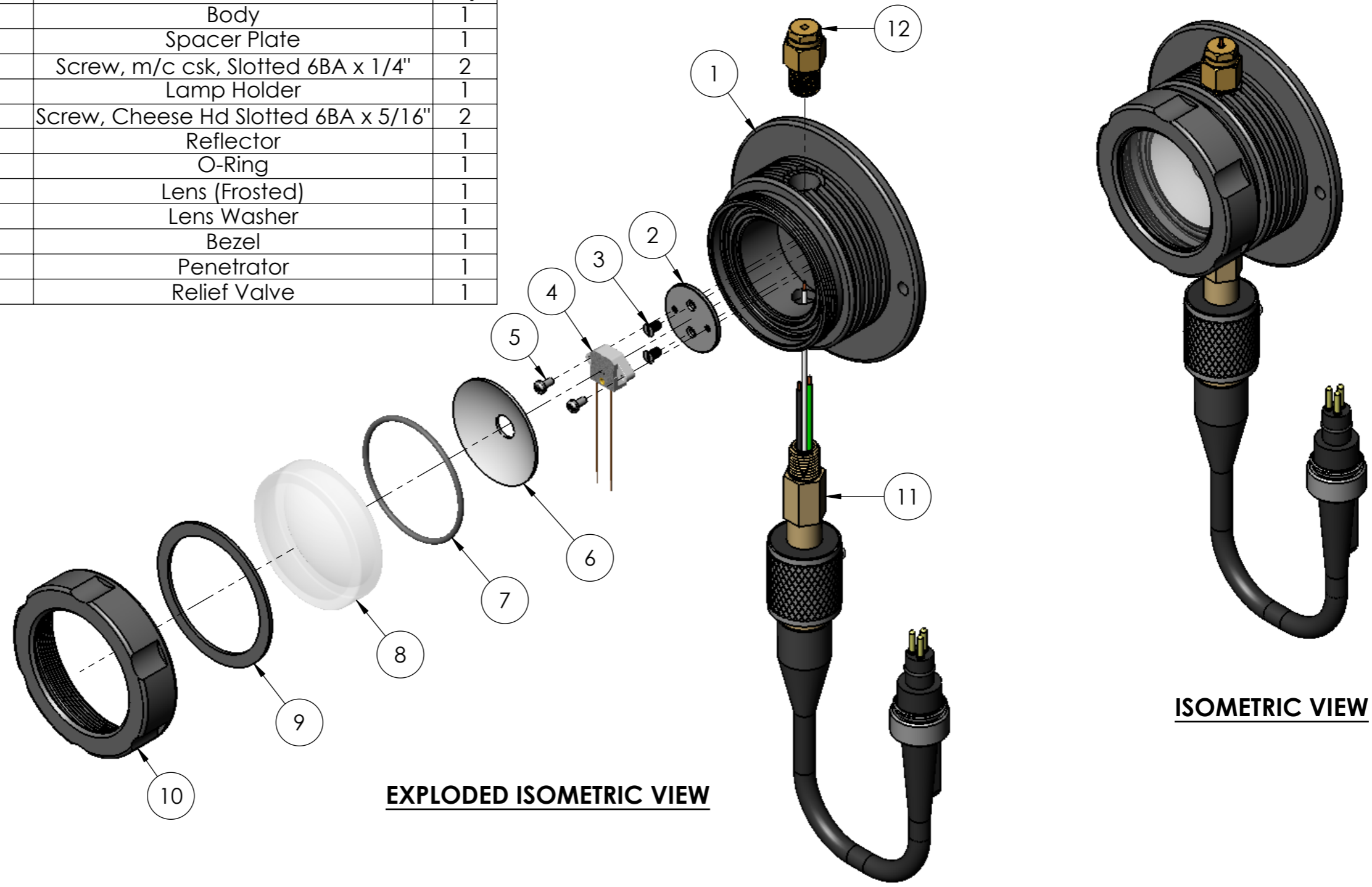



| ITEM NO. | PART NO. | DESCRIPTION | Qty. |
|----------|----------|--------------------------------------|------|
| 1 | LA101 | Body | 1 |
| 2 | LA092 | Spacer Plate | 1 |
| 3 | FB219 | Screw, m/c csk, Slotted 6BA x 1/4" | 2 |
| 4 | LA103 | Lamp Holder | 1 |
| 5 | FB935 | Screw, Cheese Hd Slotted 6BA x 5/16" | 2 |
| 6 | LA106 | Reflector | 1 |
| 7 | LA105 | O-Ring | 1 |
| 8 | LA109 | Lens (Frosted) | 1 |
| 9 | LA110 | Lens Washer | 1 |
| 10 | LA111 | Bezel | 1 |
| 11 | LA099/SW | Penetrator | 1 |
| 12 | LA104 | Relief Valve | 1 |



EXPLODED ISOMETRIC VIEW

ISOMETRIC VIEW

| | | | | | | | | |
|--------|-------------------------|------------------------|----------------|---|---------------------|--|---|----------|
| NOTES: | | | MATERIAL: | DIVEX OWNS THE COPYRIGHT OF THIS DOCUMENT AND ANY DESIGN RIGHT EMBODIED HEREIN. IT IS SUPPLIED IN CONFIDENCE AND MUST NOT BE USED FOR ANY PURPOSE OTHER THAN THAT FOR WHICH IT IS SUPPLIED AND MUST NOT BE REPRODUCED WITHOUT PERMISSION IN WRITING FROM THE OWNERS | |  DIVEX LIMITED ENTERPRISE DRIVE WESTHILL ABERDEEN, AB32 6TQ UNITED KINGDOM. | A3 | |
| | | | SEE PARTS LIST | ALL DIMENSIONS IN MM (UOS) | SCALE | | | PRODUCT |
| | | | | ALL DIMENSIONS BEFORE PLATING (UOS) | 1:2 | | | AQUABEAM |
| | R00 | ISSUED FOR MANUFACTURE | N/A | FINISH: | PART No. | | | |
| REV | DESCRIPTION OF REVISION | ECN | N/A | LA096 | | TITLE | | |
| | | | | DIMENSIONAL TOLERANCES: NO DECIMAL PLACES ±1.0 ONE DECIMAL PLACE ±0.2 TWO DECIMAL PLACES ±0.05 ANGULAR TOLERANCE ±0.5° | DRAWN BY L.Smith | DATE 06/07/2007 | LIGHT, LP 20 HYPERBARIC C/W SWITCH & CONNECTOR | |
| | | | | | | DRG No. | SHEET | REV |
| | | | | | | LA96S1 | 1 of 1 | R00 |

 **3RD ANGLE PROJECTION** **DO NOT SCALE DRAWING**