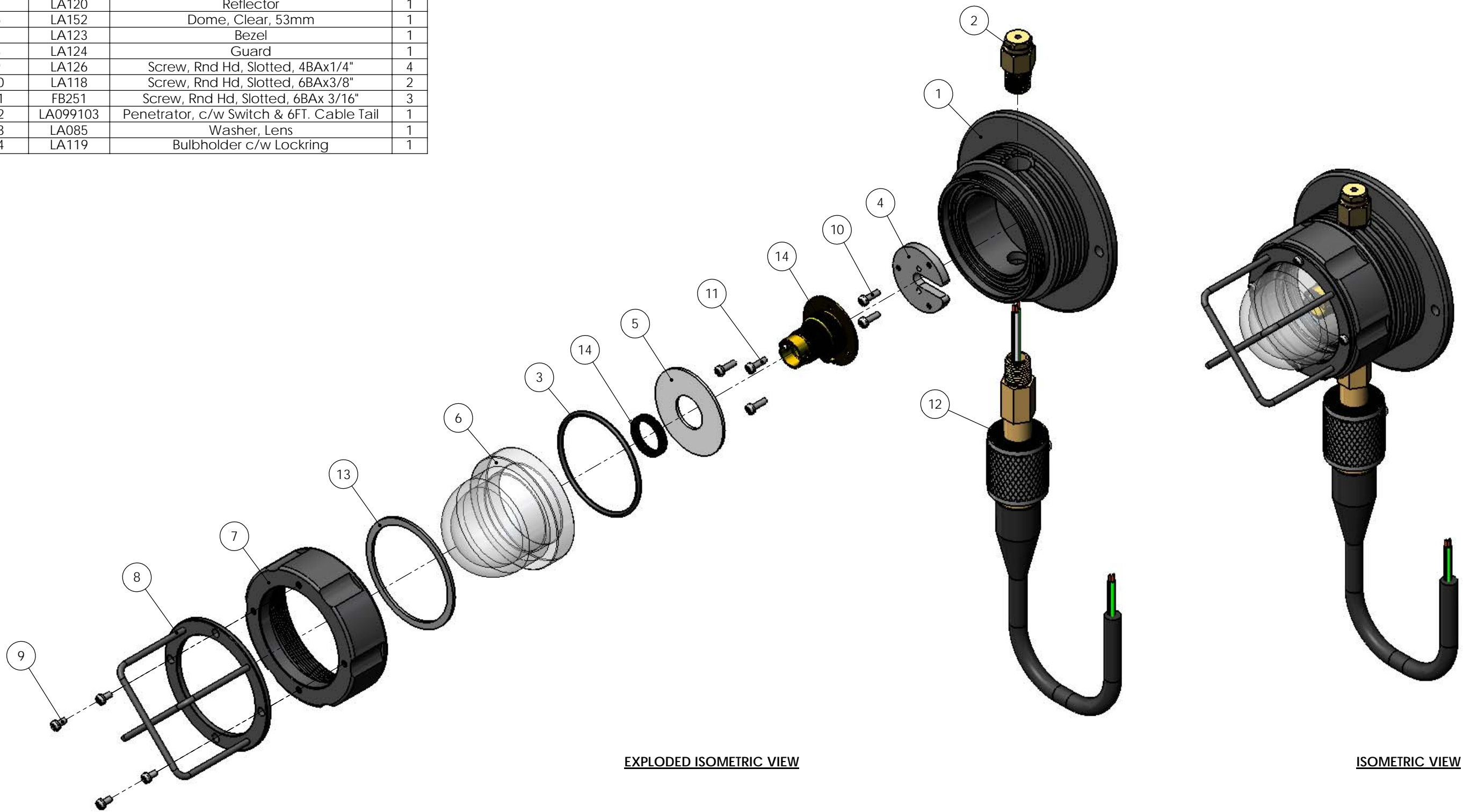


| ITEM NO. | PART NO. | DESCRIPTION                              | QTY. |
|----------|----------|--|------|
| 1        | LA101    | Body                                     | 1    |
| 2        | LA104    | Relief Valve                             | 1    |
| 3        | LA105    | O-Ring                                   | 1    |
| 4        | LA125    | Mount, Bulb Holder                       | 1    |
| 5        | LA120    | Reflector                                | 1    |
| 6        | LA152    | Dome, Clear, 53mm                        | 1    |
| 7        | LA123    | Bezel                                    | 1    |
| 8        | LA124    | Guard                                    | 1    |
| 9        | LA126    | Screw, Rnd Hd, Slotted, 4BAx1/4"         | 4    |
| 10       | LA118    | Screw, Rnd Hd, Slotted, 6BAx3/8"         | 2    |
| 11       | FB251    | Screw, Rnd Hd, Slotted, 6BAx 3/16"       | 3    |
| 12       | LA099103 | Penetrator, c/w Switch & 6FT. Cable Tail | 1    |
| 13       | LA085    | Washer, Lens                             | 1    |
| 14       | LA119    | Bulbholder c/w Lockring                  | 1    |



EXPLODED ISOMETRIC VIEW

ISOMETRIC VIEW

DIVEX OWNS THE COPYRIGHT OF THIS DOCUMENT AND ANY DESIGN RIGHT HEREIN. IT IS SUPPLIED IN CONFIDENCE AND MUST NOT BE USED FOR ANY PURPOSE OTHER THAN THAT FOR WHICH IT IS SUPPLIED AND MUST NOT BE REPRODUCED WITHOUT PERMISSION IN WRITING FROM THE OWNERS.

NOTES

ALL DIMENSIONS SHOWN ARE IN MM (UOS)  
 ALL DIMENSIONS BEFORE PLATING (UOS)  
 REMOVE ALL SHARP EDGES AND BURRS

| DIMENSIONAL TOLERANCES |             |
|------------------------|-------------|
| MACHINING              | FABRICATION |
| NO DECIMAL PLACES      | ±1.0        |
| ONE DECIMAL PLACE      | ±0.2        |
| TWO DECIMAL PLACE      | ±0.05       |
| ANGULAR TOLERANCE      | ±0.5°       |

MATERIAL  
 SEE PARTS LIST

FINISH  
 N/A

THIRD ANGLE PROJECTION

| R06 |                        |        |            |      |         |
|-----|------------------------|--------|------------|------|---------|
| R05 |                        |        |            |      |         |
| R04 |                        |        |            |      |         |
| R03 |                        |        |            |      |         |
| R02 |                        |        |            |      |         |
| R01 |                        |        |            |      |         |
| R00 | ISSUED FOR MANUFACTURE | SJ     | 11/03/2009 | RTW  |         |
| REV | DESCRIPTION            | ECN No | BY         | DATE | AUTH BY |

**DO NOT SCALE DRAWING**

TITLE  
**LIGHT, HB21 HYPERBARIC  
 C/W SWITCH &  
 6FT CABLE TAIL**

PRODUCT / PROJECT No. Aquabeam  
 PART No. LA117AA  
 DRAWING No. LA11711S1

|      |       |     |    |     |
|------|-------|-----|----|-----|
| SIZE | SCALE | SHT | OF | REV |
| A2   | 1:5   | 1   | 1  | R00 |



DIVEX LIMITED  
 ENTERPRISE DRIVE  
 WESTHILL  
 ABERDEEN  
 AB32 6TQ  
 UNITED KINGDOM  
 Tel : +44(0)1224 740145  
 Fax : +44(0)1224 740172  
 email : info@divexglobal.com  
 www.divexglobal.com