



**OPERATION MANUAL**

**for the**

**THREE DIVER, THREE REDUCER  
HP/LP AIR SUPPLY PANEL  
WITH LOW H.P. WARNING  
IN TRANSIT CASE**

**Part No. DD310019**

**DIVEX LTD**

**DOCUMENT NUMBER:** OM331

**ISSUE No:** 1

**DOCUMENT TITLE:** THREE DIVER, THREE REDUCER HP/LP AIR PANEL,  
TRANSIT CASE, LOW HP ALARM, PART No. DD310019

REV	DATE	BY	CHK	APP	COMMENTS
0	15/03/00	PGB	RTW	RTW	ORIGINAL ISSUE
1	8/11/00	SAT	JM	RTW	ECN 3311
2					
3					
4					
5					
6					
7					

**ORIGINAL ISSUE DATE:** 15/03/00

**ORIGINAL DOCUMENT BY:** P. BUCHAN

**CHECKED BY:** R.T. WYLIE

**APPROVED BY:** R.T. WYLIE

## INDEX

- 1.0 SAFETY NOTICE
- 2.0 TECHNICAL SPECIFICATION
- 3.0 GENERAL DESCRIPTION
- 4.0 INSTALLATION
- 5.0 PRE-DIVE CHECK
- 6.0 OPERATION
- 7.0 PNEUMO OPERATION
- 8.0 CYLINDER CHANGE OVER
- 9.0 LOW PRESSURE INLET
- 10.0 LOW H.P. WARNING
- 11.0 MAINTENANCE
- 12.0 MAINTENANCE SCHEDULE
- 13.0 APPENDICES

Drawing:	P2106-DG-001	General Assembly
	P2106-SL-001	Spare Parts List
	P2106-DG-002	Fit-Out Schematic
	P2016-SL-002	Spare Parts List
	P2106-DG-003	H.P. Control Valve Spare Parts
	U1011	H.P. Control Valve Spare Parts
	U1323	Low H.P. Warning Electrical Schematic

## **1.0 SAFETY NOTICE**

- 1.1 This unit must only be operated by suitable qualified personnel.
- 1.2 Before operating this equipment, read the instructions thoroughly.
- 1.3 Only genuine manufacturer's spare parts may be used and the substitution of parts from other manufacturers will invalidate the warranty and may cause damage to the equipment. When ordering spare parts, please quote the serial number of the assembly and the part numbers required.
- 1.4 It has been designed to supply air to breathing apparatus, for diving, and the manufacturers will not be responsible for its use for any other purpose.
- 1.5 The user must make himself familiar with and observe national legal requirements concerning the safe use and maintenance of the equipment. The manufacturers ensure that the equipment complies with such regulations on delivery but it remains the responsibility of the user to comply with the legal requirements in use.
- 1.6 It is the responsibility of the user to establish the flow and pressure of air required for the breathing apparatus to be employed and to ensure that the supply is adequate for the use envisaged. This responsibility includes the provision of an adequate reserve air supply.

**COMPRESSED AIR IS POTENTIALLY DANGEROUS**

**THIS EQUIPMENT MUST BE USED CORRECTLY**

**MISUSE COULD CAUSE INJURY**

## **Hose Connections**

- 2.18 LP inlet 3/8" BSP male
- 2.19 HP inlet 1/4" BSP male
- 2.20 Diver supply 3/8" BSP male
- 2.21 Pneumo 1/4" BSP male

## **Dimensions**

- 2.22 Length 770 mm (30")
- Width 250 mm (10")
- Height 550 mm (21.5")

## **3.0 GENERAL DESCRIPTION**

- 3.1 The DIVEX three-diver, three reducer, H.P./L.P. air control panel will supply low pressure breathing air to three divers working simultaneously, to a diving depth of 50 meters in fresh or salt water.
- 3.2 The box contains six completely separate high-pressure lines, two for each diver. As a back up, one L.P. inlet line is fitted, which can supply each diver with air. Non-return valves ensure that the air to one diver cannot be diverted to the other. Because there is a common air supply serving each of the divers when using the L.P. supply, the supply is not independent to each diver in this mode.
- 3.3 Each divers depth can be monitored using a pressure gauge, which measures the hydrostatic pressure in an open-ended hose from the panel to the diver.
- 3.4 The controls are packaged within a strong, non-corrosive transit case, which may be, used upright or lying flat. Handles are provided to carry the case and can be utilised to secure it as required.

## **4.0 INSTALLATION**

Using high-pressure air supply. (Refer to Drawing P2106-DG-001)

- 4.1 Ensure all on/off valves are in the OFF position.
- 4.2 Ensure H.P./L.P. reducer controls are turned fully Anti-Clockwise (1).

## **7.0 PNEUMO OPERATION**

- 7.1 Divers depth can be read from the pneumo gauges (2).
- 7.2 Turn on the pneumo valve (10) to supply air to the pneumo hose in the umbilical and allow the air to flow for sufficient time to ensure it is bubbling out of the open, diver end. (Usually confirmed by the diver via the comms).
- 7.3 When the air diver has bubbled out of the hose end, close off the supply valve (10) and read the hydrostatic pressure (shown as diver depth) on the pneumo gauge (2).
- 7.4 The depth must be checked periodically, as required, using the above method, particularly if the diver is changing his depth whilst working. When his work is completed and the diver is returning to the surface, the gauge will automatically read his ascending pressure without the necessity to supply more air to the pneumo hose.

## **8.0 CYLINDER CHANGE OVER**

- 8.1 Turn on the reserve air supply slowly via H.P. inlet valve (9). Confirm increase in pressure as noted on H.P. gauge (3).
- 8.2 Turn off the original air supply at H.P. inlet valve (9).
- 8.3 Purge H.P. hose to cylinder to be removed. Disconnect the cylinder and replace it with a charged H.P. air cylinder.
- 8.4 Slowly turn on the air cylinder at its valve.

## **9.0 LOW PRESSURE INLET**

- 9.1 The panel has the facility for an inlet from a low-pressure air supply. This low-pressure air supply must not exceed 15 bar. Connect the supply hose to the L.P. inlet and open valve (12) slowly. This supply is connected to all diver outlets. However, it is recommended that for safety reasons when using the L.P. inlet, to supply only one diver from the panel.

- 11.5 All other valves must be replaced completely if damaged. Depressurise system. Remove panel from case. Undo nut unions and remove relevant pipes. Remove damaged valve and refit new valve, re-using fittings. Remake all screwed joints using Locite 542 or equivalent. Ensure that all mating surfaces on olives are clean. Re-assemble ensuring that nut unions are not over tightened. Test for leaks and free movement of valve. Return panel to case.
- 11.6 L.P. Safety Valve  
This has been factory set at 14 BAR (200 psi). Service is by replacement only.
- 11.7 L.P. Non-Return Valve  
These are factory-sealed units and must be replaced with new if failure occurs. Remove the panel in the approved manner. Disassemble the non-return valve and replace with the new unit. Ensure that previously noted procedures regarding cleanliness, sealants and re-assembly of nut unions are adhered to.
- 11.8 H.P. Regulator  
Servicing must be carried out by an approved engineer, trained by the manufacturer in the correct maintenance of the regulator. If no local approved engineer is available, the units must be returned to DIVEX for service.
- The only permissible routine service is to clean the gauze filter, located behind the large hexagonal plugs at the rear of the regulator.
- Remove the panel in the approved manner. Locate and remove the grub screws on the rear of the regulator. Remove plugs and take out gauze filter. Clean and replace all items in reverse order.
- \*Ensure spill valve exhaust port is kept open.
- 11.9 Regulator GLD 15 Mk1 recommended spares

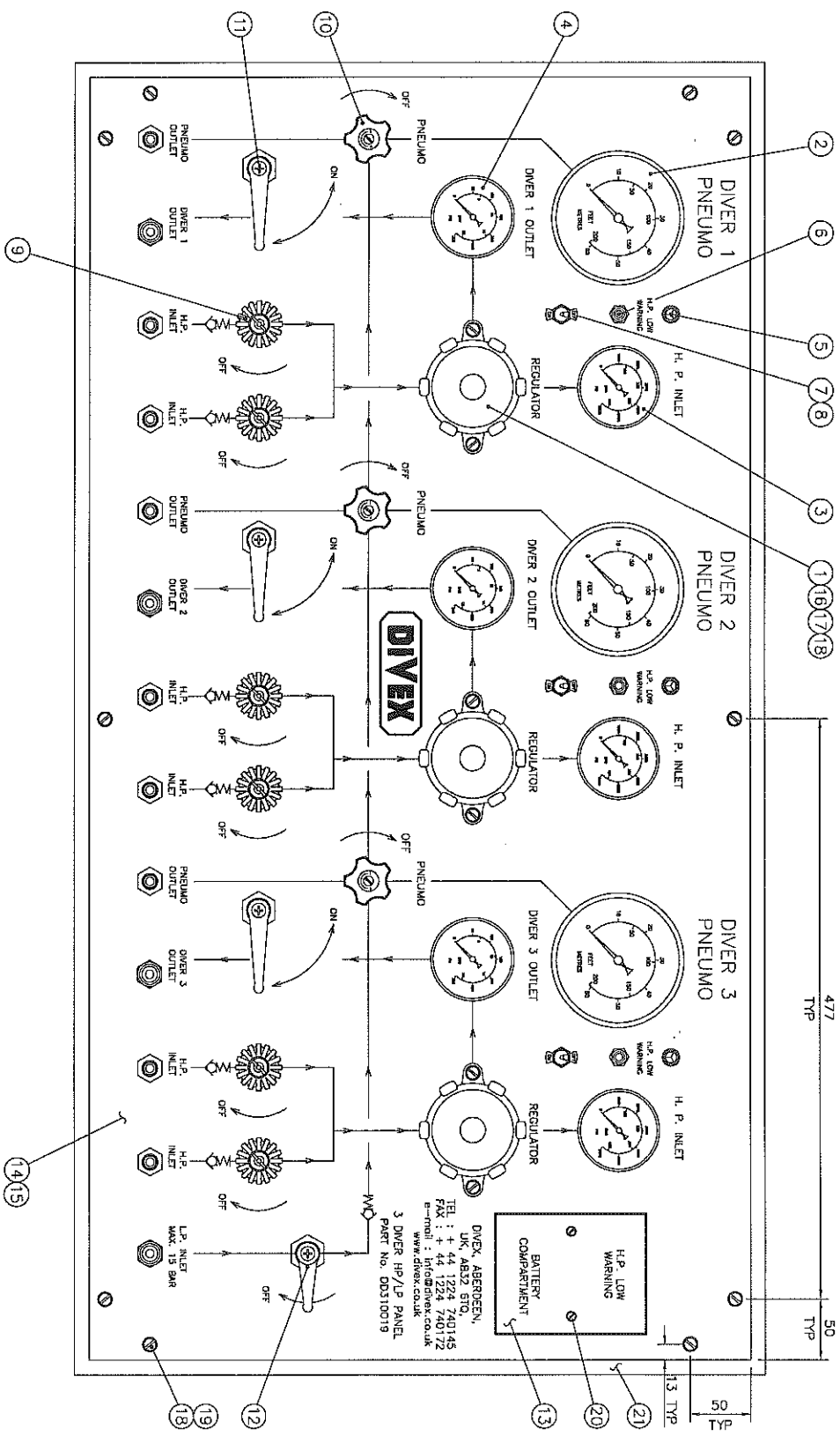
Panel valve recommended spares (Service Kit DD051201)

Part Number	Description	Qty.
DD051311	Handle retaining nut	1
DD051310	Spring	1
DD051322	Rubber Handle	1
DD051309	Nylon Washer	1
DD051323	Spindle nut	1
DD051307	Teflon spindle seal	1
DD051308	O Ring	1
DD051306	Spindle	1
DD051305	Valve seat assembly	1
DD051312	Copper washer	1
DD310302	Panel mounting nut	2
DD310307	Stainless Steel washer	1
DD310301	Valve body	1

## 12.0 MAINTENANCE SCHEDULE – 6 MONTHLY

- 12.1 Inspect lid and other casing for damage. Check hinges and catches for correct operation.
- 12.2 Remove H.P. Panel Valve. Parts as described in Section 11.11. Inspect all parts. Wipe clean with high quality industrial wiper and re-assemble. Lubricate with approved grease.
- 12.3 Inspect free movement of 90° Diver Outlet Valves, Pneumo Valves and L.P. Isolator valve. Section 11.5 for replacement.
- 12.4 Test H.P. Regulator by pressurising the system until the safety relieve valve “blows” at 200 PSI. (Should the s/valve not function correctly refer to section 11.3). When reducing pressure (turning valve anti-clockwise) listen for the release of air through the Spill Valve. If not audible refer to Section 11.8 & 11.9.
- 12.5 Inspect all gauges for leakage of oil and accuracy of needle return to zero. It may be a localised health and safety requirement that the gauges should be regularly calibrated.
- 12.6 Pressurise complete system and listen for leaks.





THIRD ANGLE PROJECTION		MATERIAL: SEE P2106-MT-001		FINISH: --		DIVEX OWNS THE COPYRIGHT OF THIS DOCUMENT AND ANY DESIGN RIGHT. REPRODUCED HEREIN IS SUPPLIED IN CONFIDENCE AND MUST NOT BE USED FOR ANY OTHER PROJECT WITHOUT PERMISSION IN WRITING FROM THE OWNERS.		DRAWN: WS DATE 22.2.99 SCALE 1 : 2.5		TITLE: 3 DIVER HP/LP PANEL, LOW H.P. WARNING, GENERAL ASSEMBLY	
						DRAFT CHECK: RTW DATE 10.2.00		ENG CHECK: RTW DATE 10.2.00		CAD REF No. 12654-1	
						APPROVED: DRS DATE 10.2.00		PRODUCT 3 DIVER PANEL		PART No. DD310019	
								DRG No. P2106-DG-001		SHT OF REV 1 1 1	
REV 1		UPDATED (EON 3535)		PW 7.8.01		DRAFT CHECK		ENG CHECK		APPD	
DESCRIPTION OF REVISION		BY		DATE		DRAFT CHECK		ENG CHECK		APPD	





A2


06-Dec-04

# DIVEX LIMITED

Item No	Description	Quantity	Eng Part No
1	REGULATOR, H.H. -GLD15 MK1	3	DD312004
2	GAUGE, PANEL, PNEUMO, 4", 60m/200'	3	DD320005
3	GAUGE, PANEL, 2 1/2", 400BAR/6000 PSI BK	3	DD320003
4	GAUGE, PANEL, 2 1/2", 21BAR/300PSI BK	3	DD320004
5	BUZZER	3	DD310368
6	L.E.D. RED	3	DD310365
7	SWITCH, TOGGLE	3	DD310369
8	LEGEND, ON-OFF	3	DD310370
9	VALVE, DD ROUND, 2 x 1/4" NPT(F) PORTS	6	DD360135
10	VALVE, PANEL, LP. PNEUMO. 1/4 BSP(F)	3	DD310312
11	VALVE, LP, 1/4 TURN, PAN.MNT., 3/8" BSP	3	VB214
12	VALVE, LP, 1/4 TURN, PAN.MNT., 1/4"BSP	1	VB213
13	COVER,BATTERY COMPARTMENT	1	DD310364
14	PANEL, BACKING PLATE	1	DD310359
15	PANEL, ENGRAVED	1	DD310378
16	WASHER, PLAIN, M6	6	FW037
17	NUT, HEX M6	6	FN035

**PROJECT:**

REV.DESCRPTION: ECN 3535  
REVISION BY: PW  
REV.DRAW CHECK:   
REV.ENG.CHECK: 

CLIENT: DIVEX  
REV.DATE: 13/08/2001  
REV.APPROVED: 

**TITLE: 3 DIVER PANEL, LOW H.P. WARNING, GENERAL ASSEMBLY  
M.T.O.**

DRAWING No: P2106-SL -001  
ORIGINAL BY: WS  
ORG.DRAWCHK: RTW  
ORG.ENG.CHK: RTW  
REV No: 1  
ORIGINAL DATE: 23/02/1999  
ORIG.APPROVED: DRS  
PART NO: DD310019



06-Dec-04


### DIVEX LIMITED

Item No	Description	Quantity	Eng Part No
18	NUT, CLINCH, M6	10	FN067
19	SCREW, PAN HD, M6 x 15 Lg.	16	FB280
20	SCREW, PAN HD, M4 x 16, SLOTTED PAN	2	FB250
21	CASE (TRANSIT), HP LP, 3 DIVER, BLACK	1	DD310358/BL K
22	HOSE ASSY, CHARGING, 1/4" BSP	6	DD310102
23	CHARGING CLAMP,	6	DD380051

**PROJECT:**

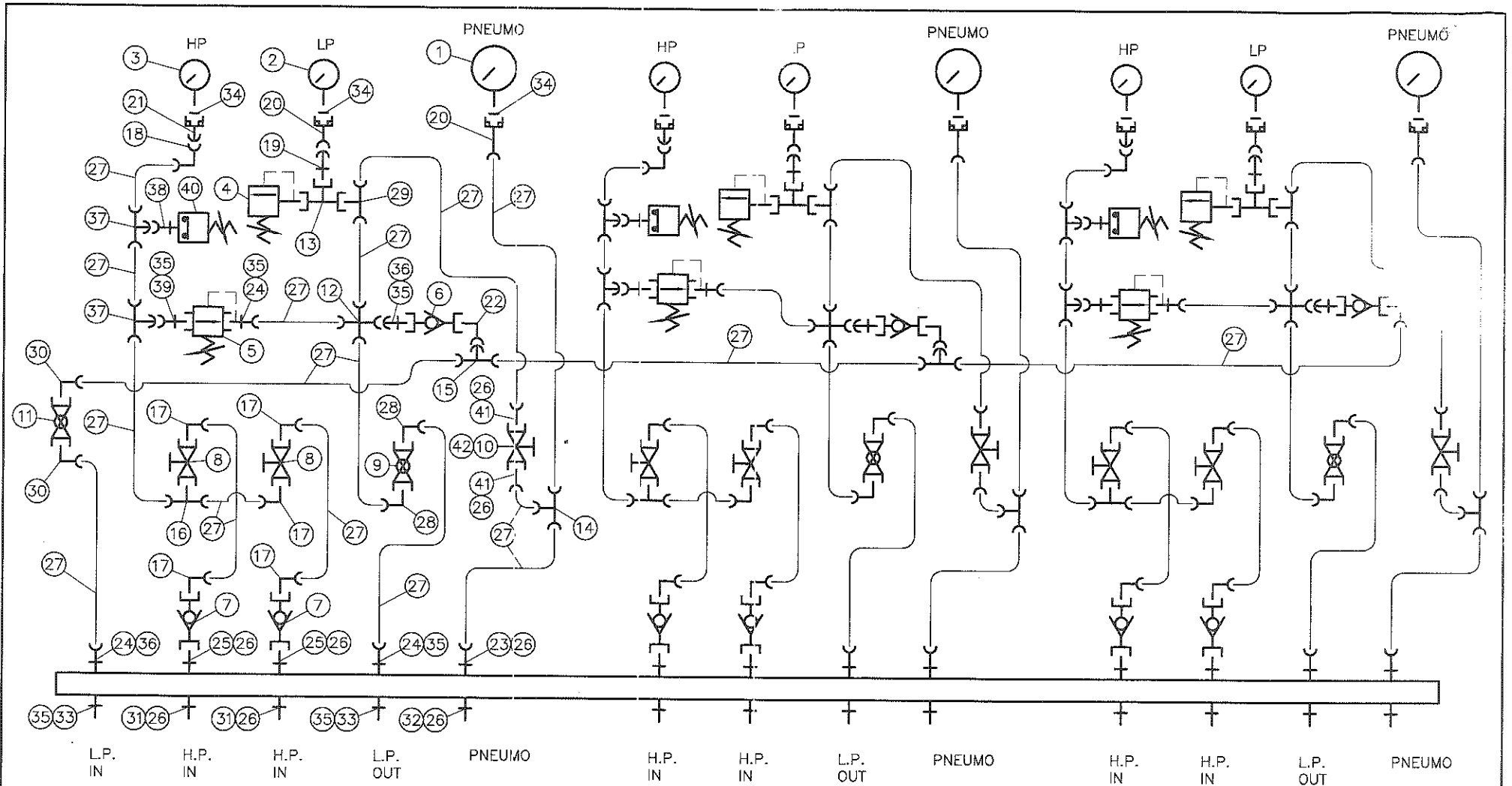
**TITLE:** 3 DIVER PANEL, LOW H.P. WARNING, GENERAL ASSEMBLY  
M.T.O.

**REV.DESCRPTION:** ECN 3535  
**REVISION BY:** PW  
**REV.DRAW CHECK:**   
**REV.ENG.CHECK:** 

**CLIENT:** DIVEX  
**REV.DATE:** 13/08/2001  
**REV.APPROVED:** 

**DRAWING No:** P2106-SL -001  
**ORIGINAL BY:** WS  
**ORG.DRAWCHK:** RTW  
**ORG.ENG.CHK:** RTW

**REV No:** 1  
**ORIGINAL DATE:** 23/02/1999  
**ORIG.APPROVED:** DRS  
**PART NO:** DD310019



THIRD ANGLE PROJECTION 		MATERIAL: -			FINISH: -		DIVEX OWNS THE COPYRIGHT OF THIS DOCUMENT AND ANY DESIGN RIGHT EMBODIED HEREIN. IT IS SUPPLIED IN CONFIDENCE AND MUST NOT BE USED FOR ANY PURPOSE OTHER THAN THAT FOR WHICH IT IS SUPPLIED AND MUST NOT BE REPRODUCED WITHOUT PERMISSION IN WRITING FROM THE OWNERS.					A3	
					ALL DIMENSIONS IN MM (UOS)		DRAWN: WS	DATE: 19.2.99	SCALE: NTS		TITLE <b>3 DIVER HP/LP PANEL, LOW H.P. WARNING, FIT-OUT SCHEMATIC</b>		
					REMOVE SHARP EDGES & BURRS		DRAFT CHECK: AJB	DATE: 15.2.00	CAD REF No. 12646-1				
					DIMENSIONAL TOLERANCES: NO DECIMAL PLACES ±1.0 ONE DECIMAL PLACE ±0.2 TWO DECIMAL PLACES ±0.05 ANGULAR TOLERANCE ±0.5°		ENG. CHECK: RTW	DATE: 15.2.00					
1	UPDATED (ECN 3535)	PW	13.8.01				APPROVED: DRS	DATE: 15.2.00			DRG No. P2106-DG-002	SHT OF 1	REV 1
REV	DESCRIPTION OF REVISION	BY	DATE	DRAFT CHECK	ENG CHECK	APPD	PRODUCT 3 DIVER PANEL	PART No. DD310019	DRG No. P2106-DG-002		SHT OF 1	REV 1	

06-Dec-04

## DIVEX LIMITED

Item No	Description	Quantity	Eng Part No
1	GAUGE, PANEL, PNEUMO, 4" ,60m/200', 1/4%	3	DD320031
2	GAUGE, PANEL, 2 1/2", 21BAR/300PSI BK	3	DD320004
3	GAUGE, PANEL, 2 1/2", 400BAR/6000 PSI BK	3	DD320003
4	SAFETY VALVE, 14 BAR, 200 PSI.	3	DD310320
5	REGULATOR, H.H. -GLD15 MK1	3	DD312004
6	NON-RETURN VALVE, L.P. 3/8	3	DD310321
7	NON-RETURN VALVE, SS, H.P. AIR	6	DD310319
8	VALVE, DD ROUND, 2 x 1/4" NPT(F) PORTS	6	DD360135
9	VALVE, LP, 1/4 TURN, PAN.MNT., 3/8" BSP	3	VB214
10	VALVE, PANEL, LP. PNEUMO. 1/4 BSP(F)	3	DD310312
11	VALVE, LP, 1/4 TURN, PAN.MNT., 1/4"BSP	1	VB213
12	CROSS, EQUAL, SERIES 8L	3	DD400679
13	TEE, BRASS, 1/4 NPT-F/M	3	DD400066
14	TEE, EQUAL, 8L SERIES	3	DD400934
15	TEE, SWIVEL BRANCH, 8L SERIES	2	DD400179
16	TEE, 1/4" NPT, MALE BRANCH, 8S SERIES	3	DD400949
17	ELBOW, 1/4 NPT STUD, SERIES 8S	15	DD401087

**PROJECT:**

**TITLE:** 3 DIVER HP/LP PANEL, LOW H.P. WARNING, FITOUT  
SCHEMATIC

**REV.DESCRPTION:** ECN 3535

**CLIENT:** DIVEX

**DRAWING No:** P2106-SL -002

**REV No:** 1

**REVISION BY:** PW

**REV.DATE:** 13/08/2001

**ORIGINAL BY:** WS

**ORIGINAL DATE:** 12/02/1999

**REV.DRAW CHECK:** 

**REV.APPROVED:** 

**ORG.DRAWCHK:** RTW

**ORIG.APPROVED:** DRS

**REV.ENG.CHECK:** 

**ORG.ENG.CHK:** RTW

**PART NO:** DD310019

06-Dec-04

**DIVEX LIMITED**

Item No	Description	Quantity	Eng Part No
18	ELBOW, EQUAL, SERIES 8S	3	DD401034
19	S/PIESTUD, 1/4 NPT, SERIES 8L	3	DD400127
20	GAUGE COUPLING, 1/4 BSP, SERIES 8L	6	DD400803
21	GAUGE COUPLING, S/PIPE, 1/4 BSP, 8S	3	DD400824
22	ELBOW, 3/8 NPT STUD, SERIES 8L	3	DD401083
23	MALE STUD, CONED, 1/4 BSP SERIES 8L	9	DD400567
24	STUD, 3/8" BSP MALE, 8L	9	DD400570
25	ADAPTOR, 1/4 BSP MALE - 1/4 NPT MALE	6	DD400005
26	SEAL, BONDED, 1/4 BSP, SELF CENTRING	15	DD401121
27	TUBE, 8MM x 1.0MM WALL, ST. ST./M	10	DD310389/1
28	ELBOW, 3/8" BSPT STUD, SERIES 8L	6	DD401086
29	TEE, MALE BRANCH, 1/4 NPT-M, SERIES 8L	3	DD400947
30	ELBOW, 1/4" BSPT STUD, SERIES 8L	2	DD401084
31	M/M, 1/4 BSP, H.P. ST.ST.	6	DD400306
32	M/M, 1/4 BSP, L.P. BRASS	3	DD400303
33	M/M, 3/8 BSP, L.P. BRASS	4	DD400304
34	MAV WASHER, 1/4	9	DD400795

**PROJECT:**
**TITLE:** 3 DIVER HP/LP PANEL, LOW H.P. WARNING, FITOUT  
SCHEMATIC
**REV.DESCRPTION:** ECN 3535**CLIENT:** DIVEX**DRAWING No:** P2106-SL -002**REV No:** 1**REVISION BY:** PW**REV.DATE:** 13/08/2001**ORIGINAL BY:** WS**ORIGINAL DATE:** 12/02/1999**REV.DRAW CHECK:** **REV.APPROVED:** **ORG.DRAWCHK:** RTW**ORIG.APPROVED:** DRS**REV.ENG.CHECK:** **ORG.ENG.CHK:** RTW**PART NO:** DD310019

06-Dec-04

## DIVEX LIMITED

Item No	Description	Quantity	Eng Part No
35	SEAL, BONDED, 3/8 BSP, SELF CENTRING	17	DD401122
36	3/8 BSP MALE - S/PIPE SERIES 8L	3	DD400136
37	TEE, SWIVEL BRANCH, SERIES 8S	6	DD400180
38	STUD, MALE, A CONED, 1/4 BSP, SERIES 8S	3	DD400597
39	STUD, MALE, 3/8 BSP, SERIES 8S	3	DD400596
40	SWITCH, PRESSURE, LP, c/w DIN CAP	3	DD360328-1
41	STUD,MALE,1/4"NPT - 8L	6	DD400552
42	LOCKNUT,PANEL,PNEUMO VALVE	3	DD310312- PN

**PROJECT:**

REV.DESCRPTION: ECN 3535

REVISION BY: PW

REV.DRAW CHECK: *[Signature]*

REV.ENG.CHECK: *[Signature]*

CLIENT: DIVEX

REV.DATE: 13/08/2001

REV.APPROVED: *[Signature]*

TITLE: 3 DIVER HP/LP PANEL, LOW H.P. WARNING, FITOUT  
SCHEMATIC

DRAWING No: P2106-SL -002

ORIGINAL BY: WS

ORG.DRAWCHK: RTW

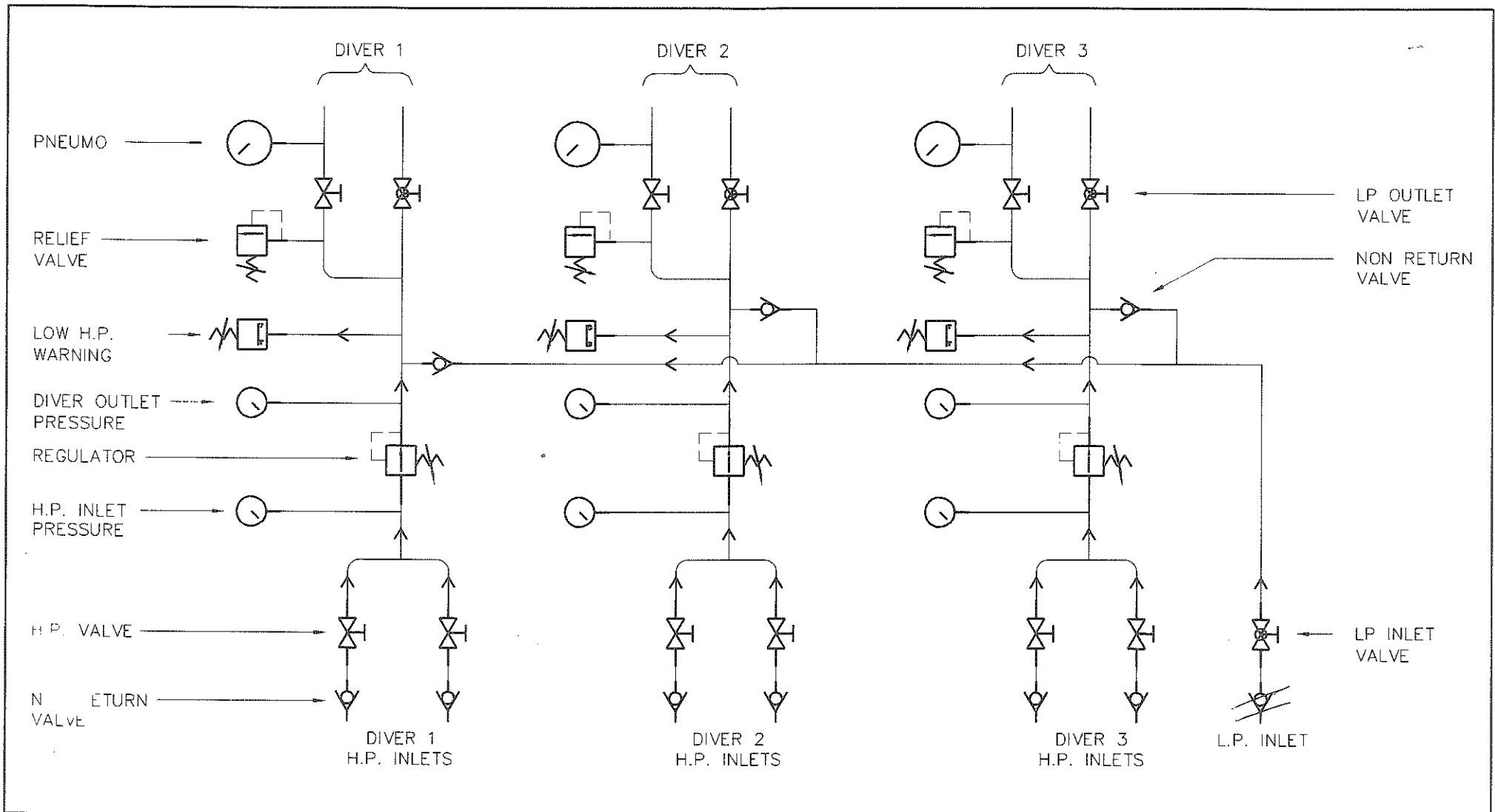
ORG.ENG.CHK: RTW

REV No: 1

ORIGINAL DATE: 12/02/1999

ORIG.APPROVED: DRS

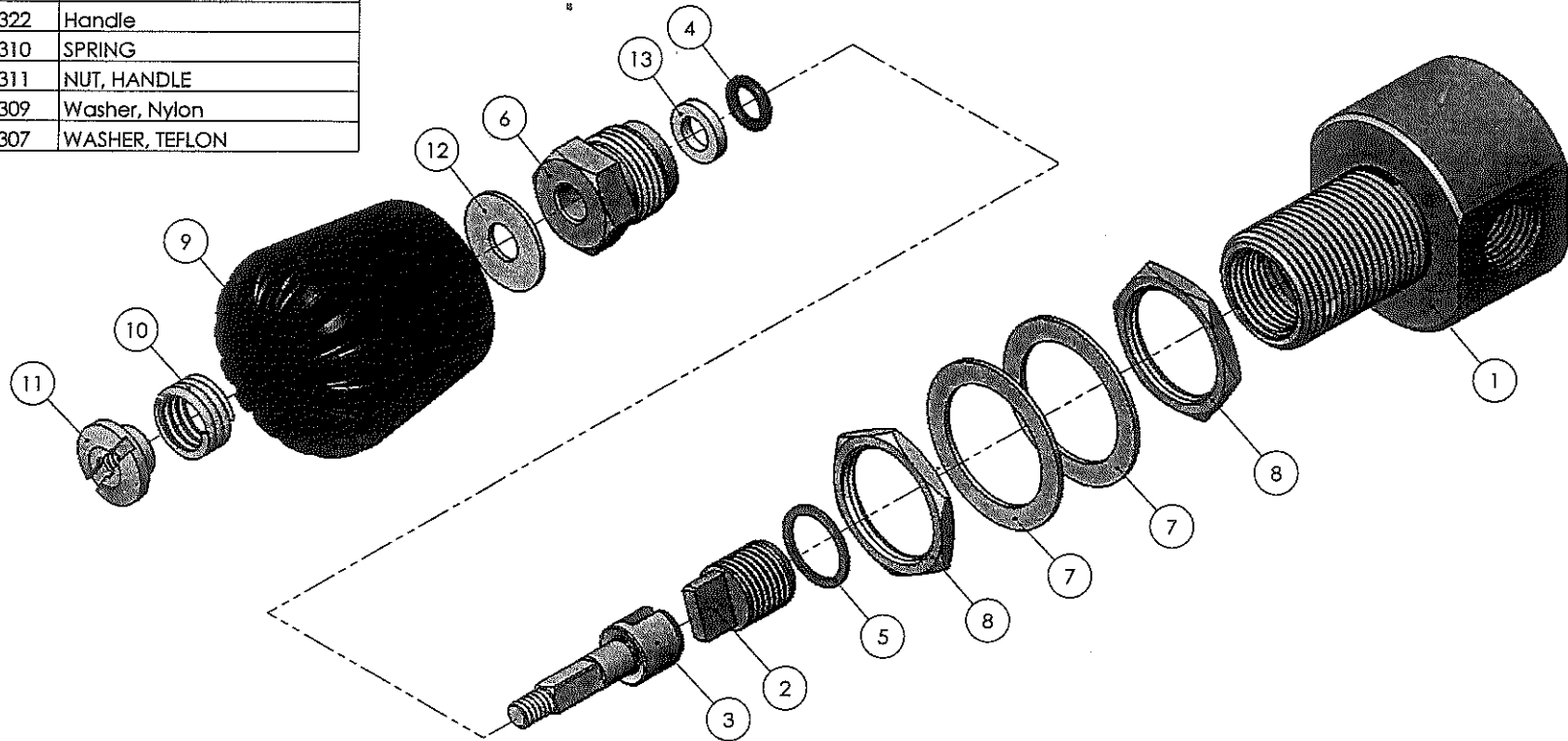
PART NO: DD310019



THIRD ANGLE PROJECTION 		MATERIAL: -			FINISH: -		DIVEX OWNS THE COPYRIGHT OF THIS DOCUMENT AND ANY DESIGN RIGHT EMBODIED HEREIN. IT IS SUPPLIED IN CONFIDENCE AND MUST NOT BE USED FOR ANY PURPOSE OTHER THAN THAT FOR WHICH IT IS SUPPLIED AND MUST NOT BE REPRODUCED WITHOUT PERMISSION IN WRITING FROM THE OWNERS.			<b>DIVEX</b> A3		
		ALL DIMENSIONS IN MM (UOS)			DRAWN: WS		DATE 23/2/99		SCALE		TITLE 3 DIVER HP/LP PANEL, LOW H.P. WARNING, LINE SCHEMATIC	
		REMOVE SHARP EDGES & BURRS			DRAFT. CHECK: A.B.		DATE 15.02.00		NTS			
		DIMENSIONAL TOLERANCES: NO DECIMAL PLACES ±1.0 ONE DECIMAL PLACE ±0.2 TWO DECIMAL PLACES ±0.05 ANGULAR TOLERANCE ±0.5°			ENG. CHECK: WTW		DATE 15.2.00		CAD REF No. 12656-0			
REV	DESCRIPTION OF REVISION	BY	DATE	DRAFT CHECK	ENG CHECK	APPD	PRODUCT 3 DIVER PANEL		PART No. DD310019		DRG No. P2106--DG--003	
									SHT OF 1 1		REV 0	



ITEM	Qty.	PART No.	DESCRIPTION
1	1	DD360331	BODY, DD ROUND VALVE
2	1	DD051305	VALVE SEAT
3	1	DD051306	SPINDLE
4	1	DD051308	'O'-Ring
5	1	DD051312	WASHER, COPPER
6	1	DD051323	NUT, STEM
7	2	DD310307	WASHER, St. St.
8	2	DD310302	NUT, HEX, PANEL MOUNT
9	1	DD051322	Handle
10	1	DD051310	SPRING
11	1	DD051311	NUT, HANDLE
12	1	DD051309	Washer, Nylon
13	1	DD051307	WASHER, TEFLON



THIRD ANGLE PROJECTION		MATERIAL:				FINISH:				DIVEC OWNS THE COPYRIGHT OF THIS DOCUMENT AND ANY DESIGN RIGHT EMBODIED HEREIN. IT IS SUPPLIED IN CONFIDENCE AND MUST NOT BE USED FOR ANY PURPOSE OTHER THAN THAT FOR WHICH IT IS SUPPLIED AND MUST NOT BE REPRODUCED WITHOUT PERMISSION IN WRITING FROM THE OWNERS		DIVEC LIMITED ENTERPRISE DRIVE WESTHILL ABERDEEN, AB32 6TQ UNITED KINGDOM.		TEL: +44 (0)1224 740145 FAX: +44 (0)1224 740172 email: info@divec.co.uk www.divec.co.uk		A3	
		SEE ABOVE								ALL DIMENSIONS IN MM (UOS)		SCALE	PRODUCT	TITLE			
6	ITEM 7 QUANTITY INCREASED	5003	PW	01.06.2004	RTW	1.6.04	RTW	1.6.04	RTW	1.6.04	ALL DIMENSIONS BEFORE PLATING (UOS)	NTS	DD ROUND VALVE	PANEL CONTROL VALVE ASSEMBLY, 1/4" NPT(F) PORTS			
5	COMPONENT PART No. CHANGE	3887	KB	29.07.2002	RTW	29.07.2002	RTW	29.07.2002	RTW	29.07.2002	REMOVE SHARP EDGES & BURRS	PART No.					
4	REDRAWN ON SOLIDWORKS	3716	AJB	12.02.2002	RTW	12.02.2002	RTW	12.02.2002	RTW	12.02.2002	DIMENSIONAL TOLERANCES: NO DECIMAL PLACES ±1.0 ONE DECIMAL PLACE ±0.2 TWO DECIMAL PLACES ±0.05 ANGULAR TOLERANCE ±0.5°	DD360135					
0	ISSUED FOR MANUFACTURE	N/A	RTW	01.12.2000	GG	07.12.2000	GG	07.12.2000	GG	07.12.2000		CAD REF No.		DRG No.			
REV	DESCRIPTION OF REVISION	ECN	DRAWN BY	DATE	DRAFTING CHECK BY	DATE	ENGINEER CHECK BY	DATE	APPROVAL BY	DATE		20271-6		U1011		SHT	REV
												6		1		6	

BATTERY DD310367

TOGGLE SWITCH  
DD310369  
ON/OFF LEGEND  
DD310370

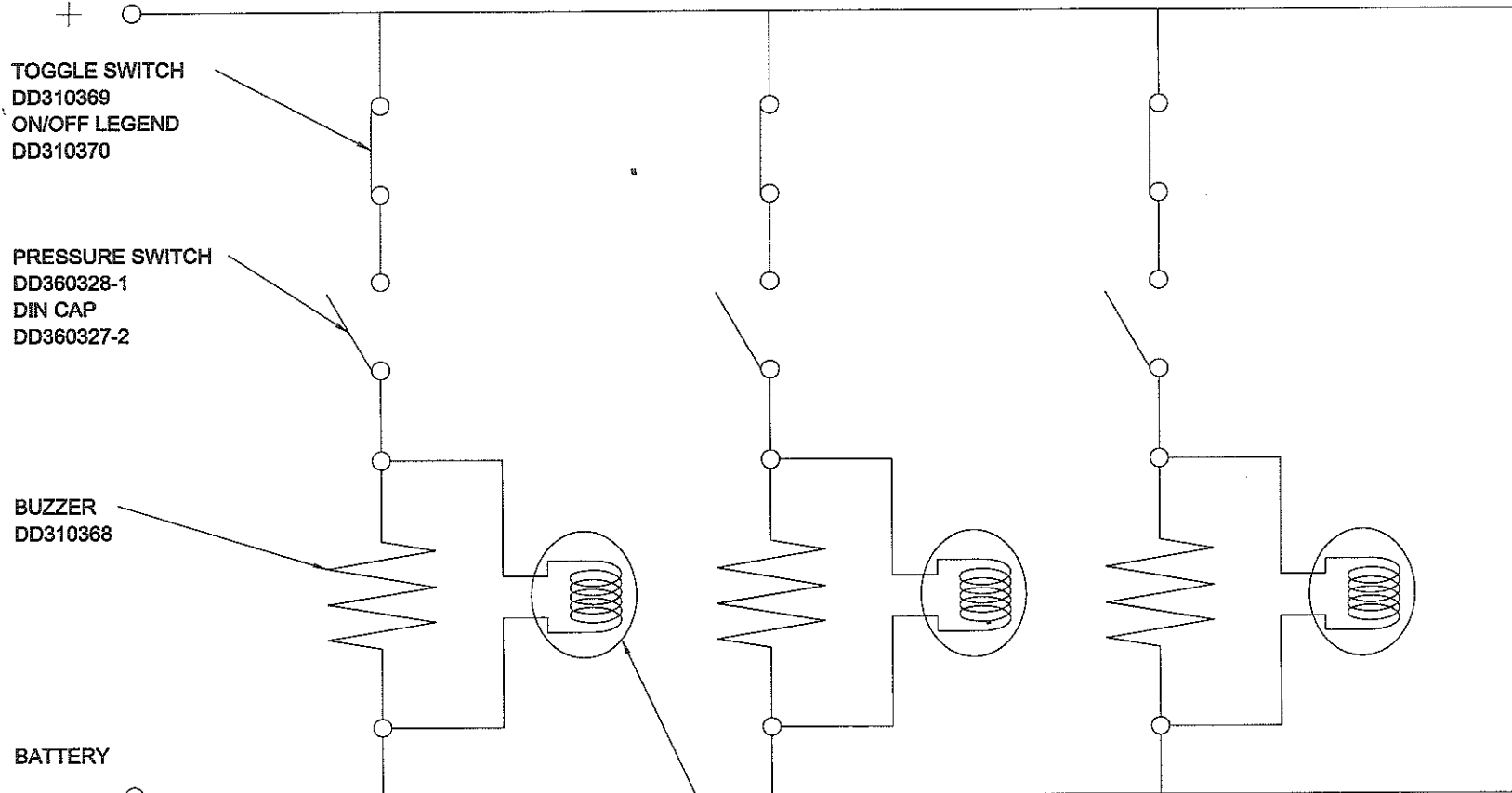
PRESSURE SWITCH  
DD360328-1  
DIN CAP  
DD360327-2

BUZZER  
DD310368

BATTERY

BATTERY HOLDER DD310366

LAMP  
DD310365



THIRD ANGLE PROJECTION 		MATERIAL: -				FINISH: -				DIVEX OWNS THE COPYRIGHT OF THIS DOCUMENT AND ANY DESIGN RIGHT EMBODIED HEREIN. IT IS SUPPLIED IN CONFIDENCE AND MUST NOT BE USED FOR ANY PURPOSE OTHER THAN THAT FOR WHICH IT IS SUPPLIED AND MUST NOT BE REPRODUCED WITHOUT PERMISSION IN WRITING FROM THE OWNERS.				DIVEX LIMITED ENTERPRISE DRIVE WESTHILL ABERDEEN, AB32 6TQ UNITED KINGDOM TEL: +44 (0) 1224 740145 FAX: +44 (0) 1224 740172 email: info@divex.co.uk www.divex.co.uk		A3		
ALL DIMENSIONS IN MM (UOS)										SCALE NTS		PRODUCT 3 DIVER PANEL		TITLE 3 DIVER PANEL ELECTRICAL SCHEMATIC				
ALL DIMENSIONS BEFORE PLATING (UOS)										PART No DD310019								
2	UPDATED	5359	GC	01.12.04	<i>WJW</i>	1.12.04	<i>WJW</i>	1.12.04	<i>WJW</i>	1.12.04	REMOVE SHARP EDGES & BURRS		CAD REF No. 15328		DRG No. U1323		SHT 1	REV 2
1	ISSUED FOR MANUFACTURE	N/A	KWC	02.12.98	RTW	02.12.98	RTW	02.12.98	RTW	02.12.98	DIMENSIONAL TOLERANCES: NO DECIMAL PLACES ±1.0 ONE DECIMAL PLACE ±0.2 TWO DECIMAL PLACES ±0.05 ANGULAR TOLERANCE ±0.5°							
REV	DESCRIPTION OF REVISION	ECN	DRAWN BY	DATE	DRAFTING CHECK BY	DATE	ENGINEER CHECK BY	DATE	APPROVAL BY	DATE								