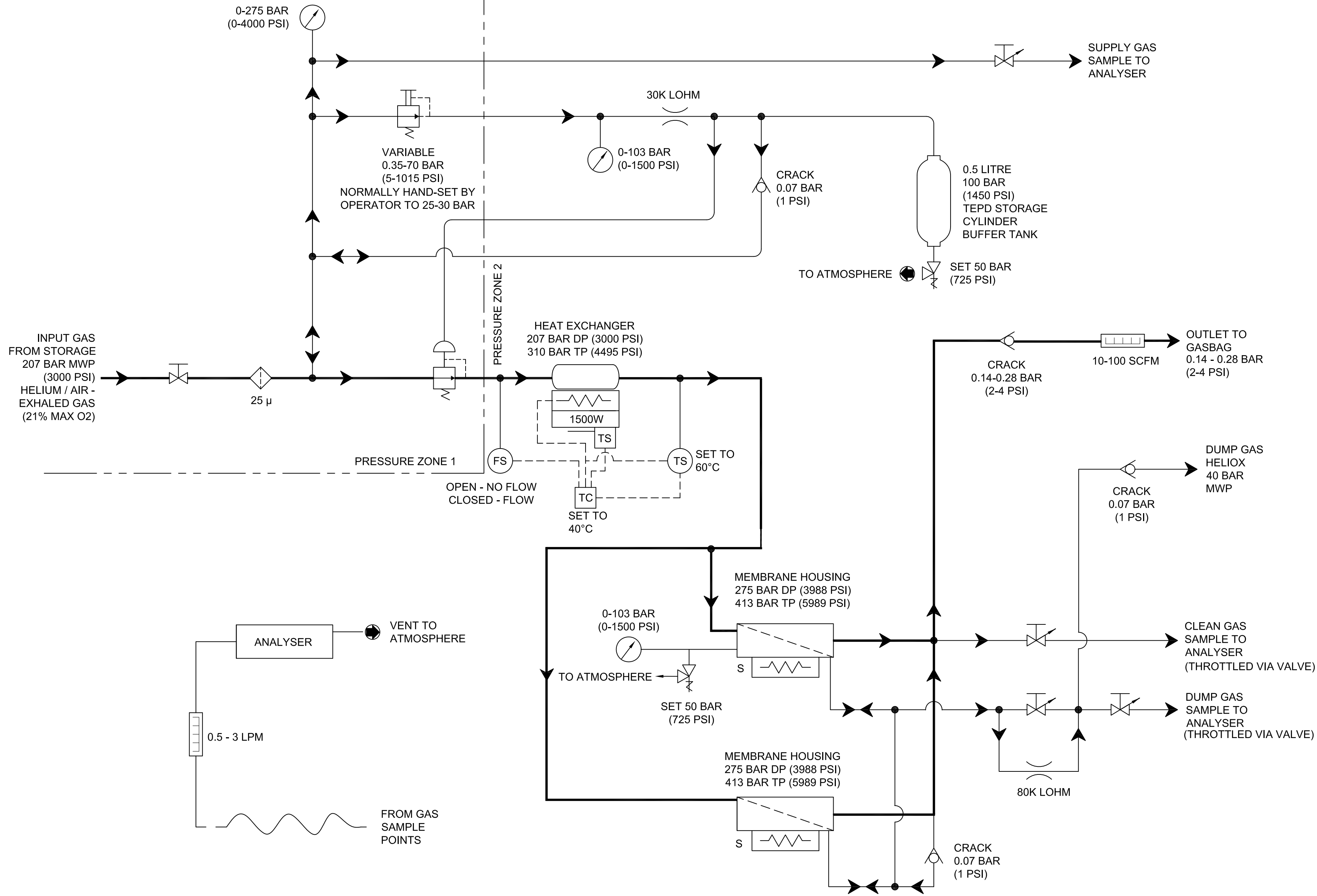


- MAIN GAS CIRCUIT
- OTHER GAS LINE
- ELECTRICAL LINE
- FLEXIBLE HOSE
- RELIEF VALVE
- FLOW CONTROL / METERING VALVE
- PRESSURE GAUGE
- SCREWLIFT VALVE
- LEE JET FLOW CONTROL
- DOME-LOADED REGULATOR
- HAND TURN PILOT REGULATOR
- FLOW DIRECTION
- CHECK VALVE
- FLOWMETER
- INLET FROM AMBIENT
- OUTLET TO AMBIENT
- FILTER
- VESSEL
- HEATER
- MEMBRANE HOUSING
- FLOWSWITCH
- TEMPERATURE SENSOR
- TEMPERATURE CONTROLLER
- SELF REGULATING TRACE HEATING
- BUFFER VOLUME



DIVEX OWNS THE COPYRIGHT OF THIS DOCUMENT AND ANY DESIGN RIGHT HEREIN. IT IS SUPPLIED IN CONFIDENCE AND MUST NOT BE USED FOR ANY PURPOSE OTHER THAN THAT FOR WHICH IT IS SUPPLIED AND MUST NOT BE REPRODUCED WITHOUT PERMISSION IN WRITING FROM THE OWNERS.

1. SYSTEM DESIGN TEMPERATURE NORMAL WORKING CONDITION 40°C, MAXIMUM TEMPERATURE HEATER CUT-OFF 60°C
 2. PRESSURE ZONE 1:
 MAX. WORKING PRESSURE 207 BAR
 PRESSURE ZONE 2:
 NORMAL WORKING PRESSURE 30 BAR
 MAXIMUM WORKING PRESSURE 40 BAR **5**
 MEMBRANE HOUSING DISCHARGE TO AMBIENT ATMOSPHERIC PRESSURE
5 DENOTES CHANGES MADE AT THIS REVISION

ALL DIMENSIONS SHOWN ARE IN MM (UOS)
 ALL DIMENSIONS BEFORE PLATING (UOS)
 REMOVE ALL SHARP EDGES AND BURRS

DIMENSIONAL TOLERANCES		
MACHINING	FABRICATION	
NO DECIMAL PLACES	±1.0	SIZE >0 <100 ±0.5
ONE DECIMAL PLACE	±0.2	SIZE >100 <500 ±1.5
TWO DECIMAL PLACE	±0.05	SIZE >500 ±3.0
ANGULAR TOLERANCE	±0.5°	ANGULAR TOLERANCE ±0.5°

MATERIAL: N/A
 FINISH: N/A
 THIRD ANGLE PROJECTION

REV	DESCRIPTION	ECN No	BY	DATE	AUTH. BY
R05	M.W.P. UPDATED	18628	MJ	29/09/15	PB
R04	PRESSURE ZONES AND NOTES ADDED	17345	JR	12/01/15	MS
R03	DIAGRAM INFO EXPANDED FOR FUNCTIONAL PARAMETERS	17215	ZD	21/11/14	MS
R02	RELIEF VALVE SET AT 50 BAR	16790	MJ	20/06/14	MS
R01	RELIEF VALVE SET AT 60 BAR	12991	SR	18/08/10	SW
R00	ISSUED FOR INFORMATION		GR	11/12/08	RTW

DO NOT SCALE DRAWING

TITLE	
PROCESS & INSTRUMENTATION DIAGRAM, HELIPURE SYSTEM	
DRAWING No.	REV
P1823900S1	R05
PART No.	PRODUCT / PROJECT No.
GR10270 VARIANTS	P1823
SIZE	SCALE
A2	NTS
SHT	OF
1	1

DIVEX LIMITED
 ENTERPRISE DRIVE
 WESTHILL
 ABERDEEN
 AB32 6TQ
 UNITED KINGDOM

Tel: +44(0)1224 740145
 Fax: +44(0)1224 740172
 email: info@divexglobal.com
 www.divexglobal.com