


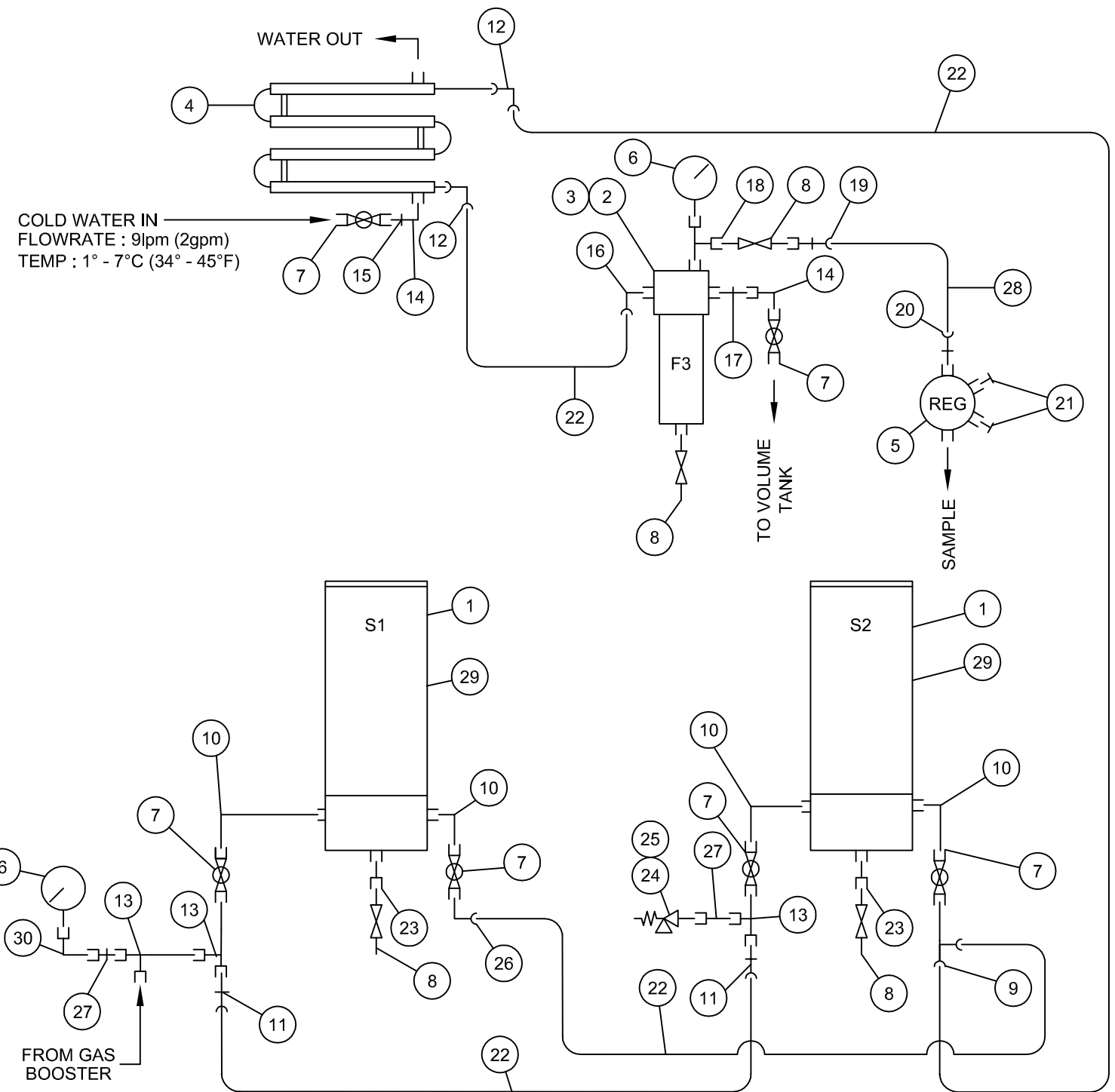




ITEM No	DESCRIPTION	QTY.	PART No.	MATERIAL	M.A.W.P.
1	SCRUBBER HOUSING ASSEMBLY	2	C1116G	SEE C81115S1	SEE C81115S1
2	FILTER HOUSING ASSEMBLY (SHORT)	1	C1143	SEE P180541S1	SEE P180541S1
3	1 MICRON FILTER ELEMENT	1	FE002	-	-
4	HEAT EXCHANGER ASSEMBLY	1	DM613E	SEE B81613S1	SEE B81613S1
5	REGULATOR, PRESSURE, 0-25 PSI, BRASS	1	RP201	BRASS	205 bar (INLET)
6	PRESSURE GAUGE, 0-2000 PSI, 1/4" NPT(M) BTM ENTRY	2	GP226	SS	2000psi
7	BALL VALVE, 3/8" NPT(F), 316 ST ST	6	DM13540	316SS	206 bar
8	SHUT-OFF VALVE, 1/4" NPT(M), BRASS	4	VS201	BRASS	161 bar
9	TEE, RUN, (M), 1/2" TUBE-3/8" MNPT, ST, ST.	1	FS495	316SS	530 bar
10	MALE ELBOW, 3/8" NPT(M), SS	4	FP394	316SS	496 bar
11	MALE CONNECTOR, 1/2" TUBE - 3/8" NPT(M), ST ST	2	FS499	316SS	220 bar
12	UNION ELBOW, 1/2" TUBE, ST ST	2	FS492	316SS	220 bar
13	STREET TEE, 3/8" NPT(F) - 3/8" NPT(M), PLATED BRASS	3	NP313	NP BRASS	207 bar
14	STREET ELBOW, 3/8" NPT(F) - 3/8" NPT(M), SS	2	FP392	316SS	386 bar
15	NIPPLE, 3/8" NPT(M), SS	1	FP398	316SS	496 bar
16	MALE ELBOW, 1/2" TUBE - 1/2" NPT(M)	1	FS496	316SS	220 bar
17	RED NIPPLE, 1/2" NPT(M) - 3/8" NPT(M), SS	1	FP499	316SS	455 bar
18	STREET TEE, 1/4" NPT(F) - 1/4" NPT(M), SS	1	FP295	316SS	390 bar
19	FEMALE CONNECTOR, 1/4" TUBE - 1/4" NPT(F), ST ST	1	FS298	316SS	350 bar
20	MALE CONNECTOR, 1/4" TUBE - 1/4" NPT(M), ST ST	2	FS299	316SS	350 bar
21	PLUG, 1/4" NPT(M), SS	2	FP290	316SS	551 bar
22	TUBE, SEAMLESS, 1/2" O.D. x 0.049" WT, 316 ST ST	12 FT	TM497	316SS	255 bar
23	ADAPTOR, 1/4" NPT(M) - 1/4" NPT(F), SS	2	FP297	316SS	455 bar
24	RELIEF VALVE, 1/4" TUBE - 1/4" NPT(M) -1650 PSI, 316 ST ST	1	VR293	316SS	338 bar
25	SPRING FOR NUPRO RELIEF VALVE	1	VM043	-	-
26	ELBOW CONNECTOR, 1/2" TUBE - 3/8" NPT(M), ST ST	1	FS497	316SS	255 bar
27	REDUCER, 3/8" NPT(M) - 1/4" NPT(F), SS	2	FP389	316SS	365bar
28	TUBE, SEAMLESS, 1/4" O.D. x 0.036" WT, 316 ST ST	1 FT	TM296	316SS	380 bar
29	CANISTER ASSEMBLY, W/REM END	2	C1638B	SEE B81638S1	-
30	ELBOW, STREET, 1/4" MNPT X 1/4" FNPT, SS	1	FP296	316SS	496 bar

SEE NOTE 1 
 SEE NOTE 1 
 SEE NOTE 2 



DIVEX OWNS THE COPYRIGHT OF THIS DOCUMENT AND ANY DESIGN RIGHT HEREIN. IT IS SUPPLIED IN CONFIDENCE AND MUST NOT BE USED FOR ANY PURPOSE OTHER THAN THAT FOR WHICH IT IS SUPPLIED AND MUST NOT BE REPRODUCED WITHOUT PERMISSION IN WRITING FROM THE OWNERS.

NOTES
 1. THESE ITEMS ARE PRESSURE VESSELS DESIGNED AND TESTED IN ACCORDANCE WITH PD5500:2015
 2. RELIEF VALVE TO BE SET PRIOR TO INSTALLATION IN ACCORDANCE WITH GEN-WP-021. SEE RELEVANT ASSEMBLY, INSPECTION AND TEST PLAN. 
 - DENOTES CHANGES MADE AT THIS REVISION.

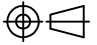
ALL DIMENSIONS SHOWN ARE IN MM (UOS)
 ALL DIMENSIONS BEFORE PLATING (UOS)
 REMOVE ALL SHARP EDGES AND BURRS

DIMENSIONAL TOLERANCES

MACHINING		FABRICATION	
NO DECIMAL PLACES	±1.0	SIZE >0 <100	±0.5
ONE DECIMAL PLACE	±0.2	SIZE >100 <500	±1.5
TWO DECIMAL PLACE	±0.05	SIZE >500	±3.0
ANGULAR TOLERANCE	±0.5°	ANGULAR TOLERANCE	±0.5°

MATERIAL
 REFER TO PARTS LIST

FINISH
 -

 THIRD ANGLE PROJECTION

REV	DESCRIPTION	ECN No	BY	DATE	AUTH. BY
R20	NOTES ADDED AND BOM UPDATED	18445	JR	02/10/15	PB
R19	TEST PRESSURE AMENDED & MATERIALS ADDED	17528	AN	20/02/15	SC
R18	PARTS LIST UPDATED	16100	MJ	26/09/13	MS
R17	PARTS LIST UPDATED	15991	MJ	26/08/13	MS
R16	PARTS LIST UPDATED	15367	MJ	12/12/2012	MS
R15	PARTS LIST UPDATED	15237	MJ	02/11/2012	MS
R00	ISSUED FOR MANUFACTURE			24/07/1990	

DO NOT SCALE DRAWING

TITLE		DRAWING No.		REV
HP GAS SYSTEM SCHEMATIC		P180525S1		R20
PART No.	PRODUCT / PROJECT No.			
B15730	GASMIZER			
SIZE	SCALE	SHT	OF	
A2	NTS	1	1	



DIVEX LIMITED
 ENTERPRISE DRIVE
 WESTHILL
 ABERDEEN
 AB32 6TQ
 UNITED KINGDOM

Tel: +44(0)1224 740145
 Fax: +44(0)1224 740172
 email: info@divexglobal.com
 www.divexglobal.com