

# HD45 UNDERWATER HAMMER DRILL

# STANLEY®



The Stanley Hydraulic HD45 Hammer Drill is a heavy duty underwater model designed for drilling in concrete, rock and masonry.



The feathering on/off valve and adjustable rotation speed allows easy drill bit start-up and precise control. The high torque rotation motor drives standard 736 Skil hex carbide tipped drill bits and is capable of drilling a 2" diameter hole up to 29" deep. Fluted drill bits require no water or air to clear holes. Ideal for drilling holes for setting anchor bolts. Painted hi-visibility yellow.

## SPECIFICATIONS

<b>Chuck Capacity</b>	Up to 2" diameter or 4" core bit
<b>Steel Capacity</b>	736 Skil hex
<b>Circuit Type</b>	Open Center
<b>Flow Range</b>	7-9 gpm / 26-34 lpm
<b>Optimum Flow</b>	8 gpm / 30 lpm
<b>Working Pressure</b>	1500-2000 psi / 105-140 bar
<b>Full Relief Setting</b>	2250 psi / 155 bar
<b>Rotation Speed</b>	0 - 300 rpm
<b>Weight (less tool bit)</b>	49 lbs / 22.2 kg
<b>Length</b>	24½" / 62.2 cm
<b>Width (at handles)</b>	14" / 35 cm
<b>Hydraulic Ports</b>	-8 SAE O-ring
<b>Couplers</b>	Varies with model (See ordering information)
<b>Hose Whips</b>	Yes (¾" NPT Male thread)

## FEATURES

- T-Handle with large on/off trigger for precise control
- Stainless Steel spools and fasteners
- Forward-Reverse with adjustable bit rotation speed
- Feathering on/off valve allows easy start and control
- Uses 736 Skil fluted carbide tipped drill bits - requires no water/air to clear holes
- Drills ¾" to 2" diameter holes up to 29" deep and core drills up to 4" in diameter
- Operates in any position
- Trouble free drill steel latch retainer

# HD45 UNDERWATER HAMMER DRILL

**STANLEY**<sup>®</sup>

## ORDERING INFORMATION

### PART NUMBER

- HD45310** Hammer Drill, Underwater, less couplers  
**HD4531001** Hammer Drill, Underwater, CE, Trigger Lock, with couplers

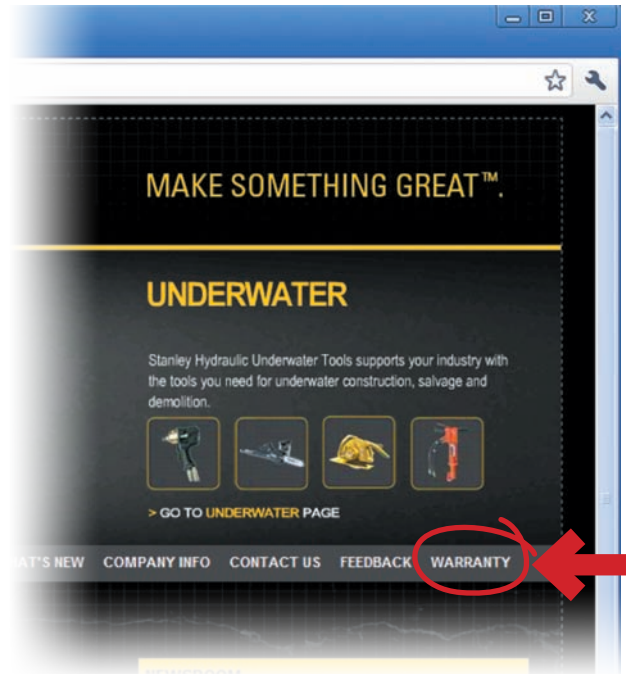
### ACCESSORIES

- 03971** Flush-Face Coupling Set, 3/8" NPT  
**03974** Flush-Face Coupling Set, 1/2" NPT  
**31848** Dual Hose, 50' x 1/2", with couplers  
**31972** Dual Hose, 25' x 1/2", with couplers  
**58633** Twinned Hose, 25' x 1/2", with couplers  
**58634** Twinned Hose, 50' x 1/2", with couplers  
**02280** Carbide Bit, 3/4" x 24" OAL  
**05163** Carbide Bit, 7/8" x 24" OAL  
**02281** Carbide Bit, 1" x 24" OAL  
**02282** Carbide Bit, 1 1/4" x 24" OAL  
**05167** Carbide Bit, 1 1/2" x 24" OAL  
**02283** Carbide Bit, 2" x 24" OAL  
**04668** Carbide Bit, 1" x 18" OAL  
**04896** Carbide Bit, 1 1/4" x 36" OAL  
**27902** Percussion Core Bit, 2 1/2" diameter x 6" OAL (part #30279 required)  
**27904** Percussion Core Bit, 3" diameter x 6" OAL (Part #30279 required)  
**30279** HD45 (Skil 736) Adapter

When hydraulic hose exceeds 100' (30.4 m) in length, increase I.D. of both pressure and return hose. For more information, consult Stanley Hydraulic Tools.

### IMPORTANT

To fill out a Product Warranty Recording form and for information on your warranty visit [stanleyhydraulic.com](http://stanleyhydraulic.com) and select the Warranty tab.



**Note:** The warranty recording form must be submitted to validate the warranty.

All Stanley Hydraulic Tools, parts, accessories and allied equipment are subject to design improvements, specifications and price changes at any time without notice and with no obligation to units already sold. Weights, dimensions and operating specifications listed herein are subject to change without notice. Where specifications are critical to your applications, please consult Stanley Hydraulic Tools.