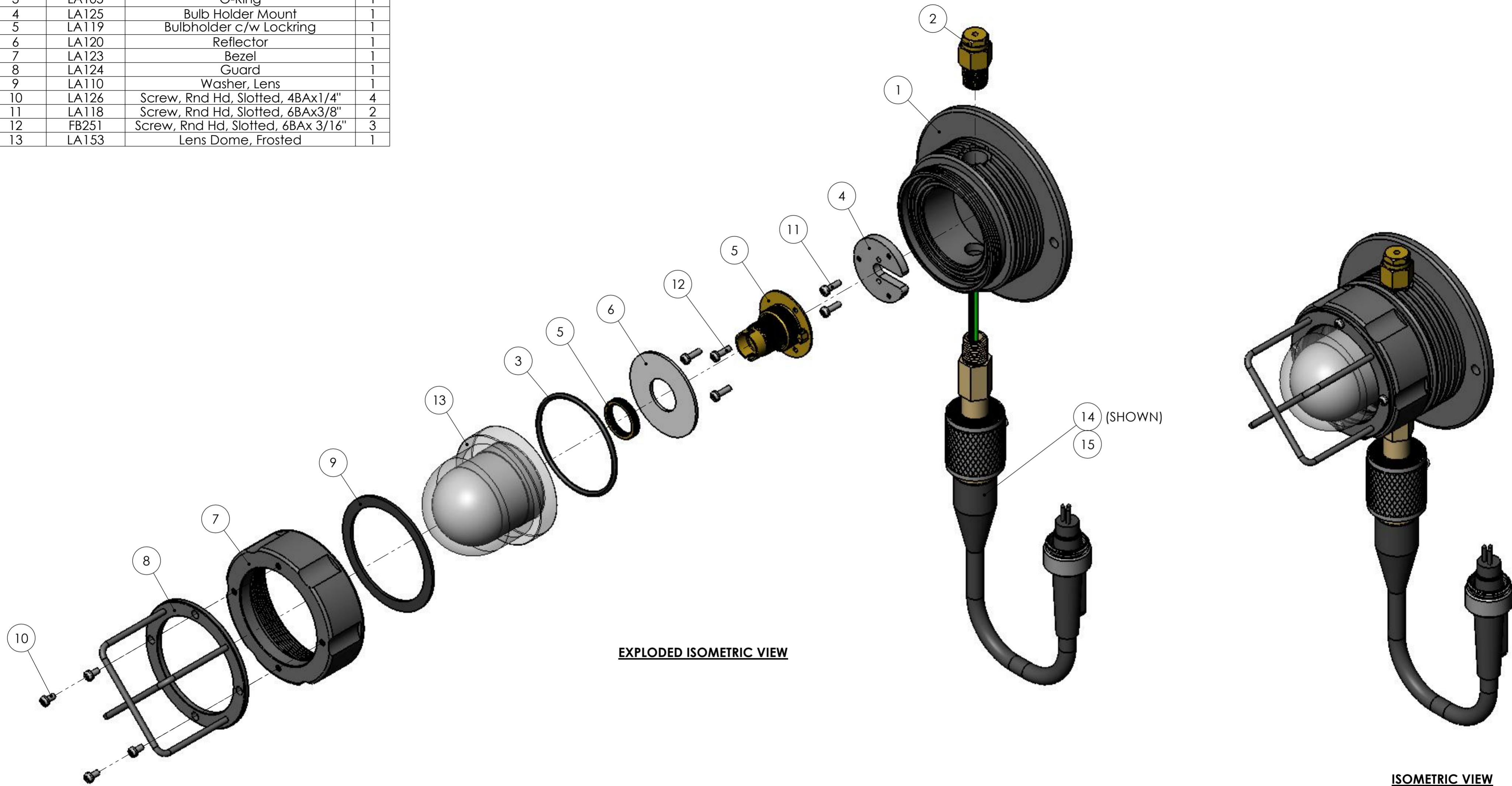


ITEM	PART NO.	DESCRIPTION	QTY.
1	LA101	Body	1
2	LA104	Relief Valve	1
3	LA105	O-Ring	1
4	LA125	Bulb Holder Mount	1
5	LA119	Bulbholder c/w Lockring	1
6	LA120	Reflector	1
7	LA123	Bezel	1
8	LA124	Guard	1
9	LA110	Washer, Lens	1
10	LA126	Screw, Rnd Hd, Slotted, 4BAx1/4"	4
11	LA118	Screw, Rnd Hd, Slotted, 6BAx3/8"	2
12	FB251	Screw, Rnd Hd, Slotted, 6BAx 3/16"	3
13	LA153	Lens Dome, Frosted	1

ITEM	PART NO.	DESCRIPTION	QTY.
14	LA099104	Penetrator, 33Ft. Cable, c/w Switch	1
15	LA099103	Penetrator, 6Ft. Cable, c/w Switch	1



EXPLODED ISOMETRIC VIEW

ISOMETRIC VIEW

DIVEX OWNS THE COPYRIGHT OF THIS DOCUMENT AND ANY DESIGN RIGHT HEREIN. IT IS SUPPLIED IN CONFIDENCE AND MUST NOT BE USED FOR ANY PURPOSE OTHER THAN THAT FOR WHICH IT IS SUPPLIED AND MUST NOT BE REPRODUCED WITHOUT PERMISSION IN WRITING FROM THE OWNERS.

NOTES	ALL DIMENSIONS SHOWN ARE IN MM (UOS) ALL DIMENSIONS BEFORE PLATING (UOS) REMOVE ALL SHARP EDGES AND BURRS	MATERIAL SEE PARTS LIST	R06						TITLE LIGHT HB21 HYPERBARIC C/W FROSTED DOME, SWITCH & CABLE TAIL	
	DIMENSIONAL TOLERANCES MACHINING FABRICATION	FINISH N/A	R05						PRODUCT / PROJECT No. Aquabeam	
	NO DECIMAL PLACES ±1.0 SIZE >0 <100 ±0.5 ONE DECIMAL PLACE ±0.2 SIZE >100 <500 ±1.5 TWO DECIMAL PLACE ±0.05 SIZE >500 ±3.0 ANGULAR TOLERANCE ±0.5° ANGULAR TOLERANCE ±0.5°	THIRD ANGLE PROJECTION	R04						PART No. LA117FA DRAWING No. LA11761S1	
			R03						SIZE A2 SCALE 1:5 SHT 1 OF 1 REV R00	
			R02							
			R01							
			R00	ISSUED FOR MANUFACTURE			SJ	20/11/2008	RTW	
			REV	DESCRIPTION	ECN No	BY	DATE	AUTH BY		
			DO NOT SCALE DRAWING							

DIVEX LIMITED
ENTERPRISE DRIVE
WESTHILL
ABERDEEN
AB32 6TQ
UNITED KINGDOM

Tel : +44(0)1224 740145
Fax : +44(0)1224 740172
email : info@divexglobal.com
www.divexglobal.com