

DESIGN SPECIFICATION:

MAX WORKING PRESSURE: 1500PSI
 DESIGN PRESSURE: 1650PSI
 DESIGN TEMPERATURE: +55°C

TUBING HYDRO-TEST PRESSURE: 2475PSI

PRESSURE VESSEL* TEST PRESSURES: REFER TO VESSEL ASSEMBLY DRAWINGS

*FOR PRESSURE VESSEL IDENTIFICATION REFER TO DRAWING P180525S1

LEGEND

— MAIN GAS CIRCUIT

— OTHER GAS LINE

⊗ BALL VALVE

▣ FILTER

⊙ PRESSURE GAUGE

⊕ SCREWLIFT VALVE

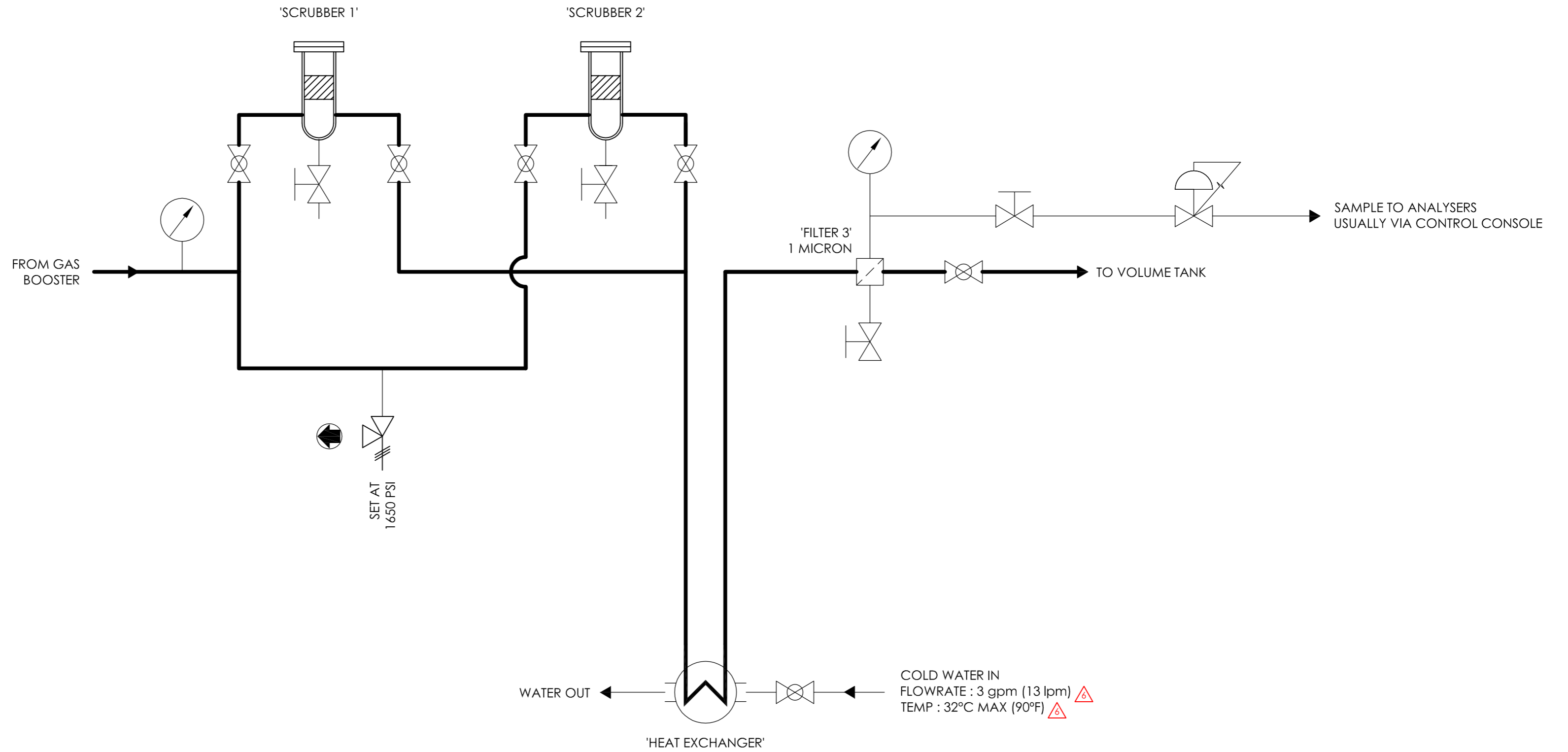
⊕ BACK PRESSURE REGULATOR

⊕ RELIEF VALVE

⊕ HEAT EXCHANGER

⊕ SCRUBBER (SODALIME & PURAFIL)

⊕ OUTLET TO AMBIENT



NOTES:
 INPUTS AND OUTPUTS TO UNIT ARE ANNOTATED ASSUMING UNIT IS PART OF A CORRECTLY INSTALLED DIVEX GASMIZER SYSTEM.

△ DENOTES CHANGES MADE AT THIS REVISION						TITLE	
R06	FIGURES UPDATED	21291	DR	24/07/17	AN	PROCESS AND INSTRUMENTATION DIAGRAM, HP GAS SYSTEM, REPROCESSING UNIT	
R05	DESIGN SPECIFICATION ADDED	18445	MJ	18/09/15	PB		
R04	BYPASS LINE REMOVED	17321	JR	22/12/14	SC		
R00	ISSUED FOR MANUFACTURE		GC	11/12/08	RTW		
REV	DESCRIPTION	ECN	BY	DATE	AUTH.	DRAWING NO. P1805903S1	REV R06
THIRD ANGLE PROJECTION		DO NOT SCALE DRAWING		PART NO. B15730		PRODUCT / PROJECT No. GASMIZER	
JFD OWNS THE COPYRIGHT OF THIS DOCUMENT AND ANY DESIGN RIGHT HEREIN. IT IS SUPPLIED IN CONFIDENCE AND MUST NOT BE USED FOR ANY PURPOSE OTHER THAN THAT FOR WHICH IT IS SUPPLIED AND MUST NOT BE REPRODUCED WITHOUT PERMISSION IN WRITING FROM THE OWNERS.				SIZE A2	SCALE (VDG) NTS	SHEET 1 OF 1	

JFD WESTHILL
 ENTERPRISE DRIVE,
 WESTHILL, ABERDEEN,
 AB32 6TQ, UK
 TEL: +44 (0)1224 740145
 E: enquiries@jfdglobal.com
 W: jfdglobal.com