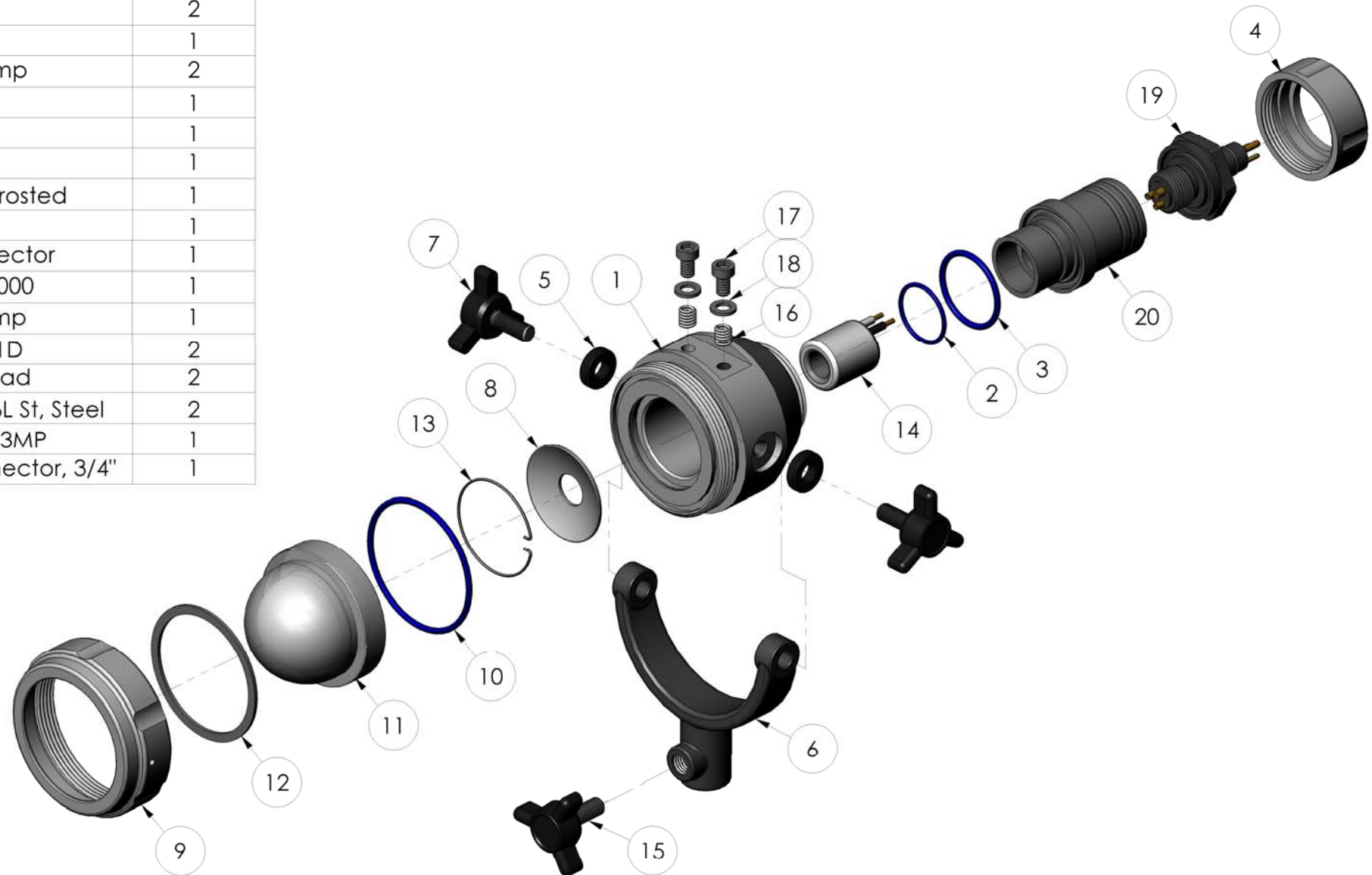


ITEM NO.	PART NUMBER	DESCRIPTION	Qty.
1	LA308	Body, Lamp, SFL3000	1
2	LA310	O-Ring, Barrel	1
3	LA311	O-Ring, Barrel	1
4	LA314	Ring, Barrel, Retaining	1
5	LA087	Spacer, Yoke	2
6	LA079	Yoke	1
7	LA086	Screw, Body Clamp	2
8	LA306	Reflector	1
9	LA304	Bezel	1
10	LA307	O-Ring, Dome	1
11	LA151	Lens Dome, 38mm, Frosted	1
12	LA085	Lens, Washer	1
13	LA305	Clip, Retaining, Reflector	1
14	LA309	Lampholder, SFL3000	1
15	LA088	Screw, Yoke Clamp	1
16	LA157316	Helicoil M6 x 1.0 1D	2
17	LA320	M6 x 10lg, Hex Head	2
18	FW123	Washer, M6, Form A, 316L St, Steel	2
19	CO072XSGM	Connector AXSG - 3MP	1
20	LA326	Barrel, Lampholder/Connector, 3/4"	1



**ASSEMBLED ISOMETRIC VIEW**



**EXPLODED ISOMETRIC VIEW**

NOTES:

R00	ISSUED FOR MANUFACTURE	N/A
REV	DESCRIPTION OF REVISION	ECN

MATERIAL:

SEE PARTS LIST

FINISH:

N/A

DIVEX OWNS THE COPYRIGHT OF THIS DOCUMENT AND ANY DESIGN RIGHT EMBODIED HEREIN. IT IS SUPPLIED IN CONFIDENCE AND MUST NOT BE USED FOR ANY PURPOSE OTHER THAN THAT FOR WHICH IT IS SUPPLIED AND MUST NOT BE REPRODUCED WITHOUT PERMISSION IN WRITING FROM THE OWNERS

ALL DIMENSIONS IN MM (UOS)	SCALE	PRODUCT
ALL DIMENSIONS BEFORE PLATING (UOS)	1:2.5	AQUABEAM
REMOVE SHARP EDGES & BURRS	PART No.	LA300AD
DIMENSIONAL TOLERANCES: NO DECIMAL PLACES ±1.0 ONE DECIMAL PLACE ±0.2 TWO DECIMAL PLACES ±0.05 ANGULAR TOLERANCE ±0.5°	DRAWN BY	DATE
	L.Smith	11/09/2007

**DIVEX**  
 DIVEX LIMITED  
 ENTERPRISE DRIVE  
 WESTHILL  
 ABERDEEN AB32 6TO  
 UNITED KINGDOM.  
 TEL: +44 (0)1224 740145  
 FAX: +44 (0)1224 740172  
 email: info@divex.co.uk  
 www.divex.co.uk

A3

TITLE  
**LAMP, SFL3000,  
 C/W YOKE & 3 PIN XSGM  
 CONN, ASSEMBLY**



**DO NOT SCALE DRAWING**

DRG No.	SHEET	REV
LA30014S1	1 of 1	R00